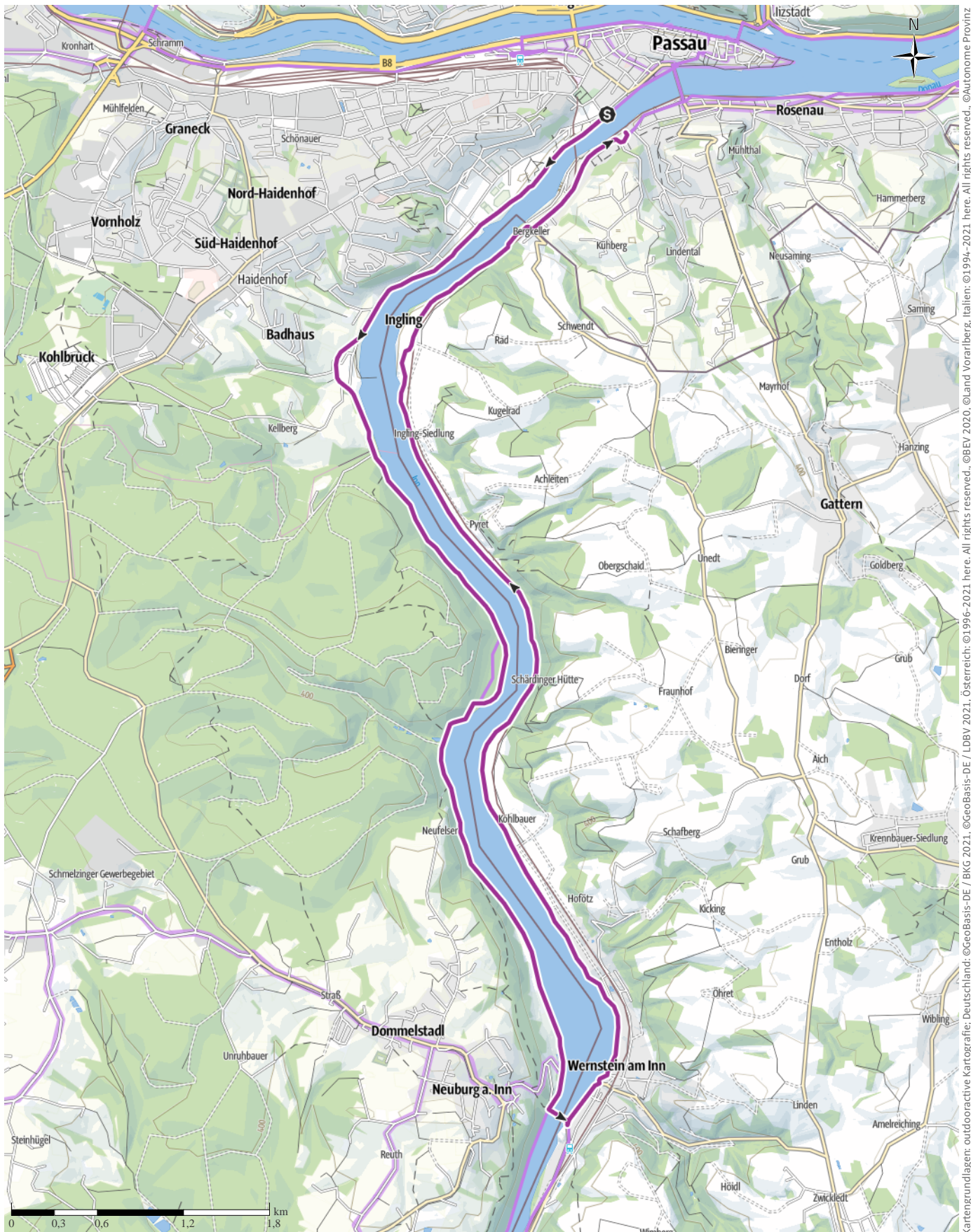


Inn Valley: Passau - Neuburg - Wernstein - Passau

← 17,8 km | ⌚ 1:15 h | ⚡ 20 m | ⚖ 16 m | Schwierigkeit -



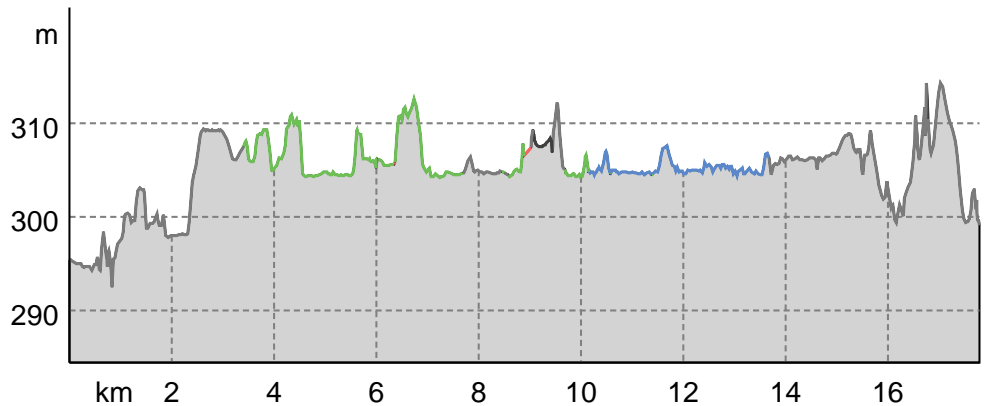
Kartengrundlagen: outdooractive Kartografie; Deutschland: ©GeoBasis-DE / LDBV 2021, Österreich: ©1996-2021 here, All rights reserved. ©BBEV 2020, ©Land Vorarlberg, Italien: ©1994-2021 here, All rights reserved. ©Autonome Provinz Bozen – Südtirol – Abteilung Natur, Landschaft und Raumentwicklung, © Cartago S.R.L. Kartengrundlagen: outdooractive Kartografie; ©OpenStreetMap (www.openstreetmap.org)

Inn Valley: Passau - Neuburg - Wernstein - Passau

Wegarten

Asphalt	8,6 km
Schotterweg	3,5 km
Naturweg	5,1 km
Pfad	0,2 km
Straße	0,4 km

Höhenprofil



Tourdaten

Radtour

Strecke	↔	17,8 km
Dauer	🕒	1:15 h
Aufstieg	⬆️	20 m
Abstieg	⬇️	16 m

Schwierigkeit -

Kondition ●●●●●●

Technik ●●●●●●

Höhenlage

Beste Jahreszeit

JAN | FEB | MÄR
 APR | MAI | JUN
 JUL | AUG | SEP
 OKT | NOV | DEZ

Bewertungen

Autoren

Erlebnis ●●●●●

Landschaft ●●●●●

Community

Weitere Tourdaten



Quelle
 Stadt Passau - Passau Tourismus & Stadtmarketing
 Bahnhofstraße 28
 94032 Passau
 Bayern
 Telefon +49 851 396610
 Fax
 marketing@passau.de
<https://tourismus.passau.de/>

pedestrian bridge "Mariensteg" to "Wernstein" (Austria). Here are plenty of places for rest and refreshments. Back along the Inn on the Austrian side downstream to the "Innsteg" in Passau. The starting point is on the opposite side of the bridge.

Starting e.g. from Innstraße: cycle upstream at the "Innsteg" pedestrian bridge on the promenade. On the right side are the buildings of the university located. Follow the signs to the Inn Cycle Path. As soon as the path leads back onto the road, keep half right and follow "Innstraße" passing the hydropower plant and the building of the rowing club. At the hiking car parking "Ingling" ride straight ahead into "Neuburger Wald". After 4 km along the river Inn cross it at the