



PASSAU

THE CITY ON THREE RIVERS

your Bavarian rivers rendezvous



PASSAU FOR GROUPS

Sales & Cruise Guide 2024 / 2025

IMPRESSIONS OF PASSAU.



EDITORIAL

With over 2,000 years of history and a unique location, Passau is a perfect destination for visitors from all over the world. Where else could you experience culture and nature side by side? The Celts, Romans, Bavarians – they all left lasting traces. Same the Prince-Bishops of Passau, whose territory later became part of the Kingdom of Bavaria which is today the Free State of Bavaria. Besides the great monuments from the past, Passau offers a unique spectacle of nature: the confluence of the Danube, Inn and Ilz rivers. Coming from the west, the south and the north, the three rivers unite as the Danube and continue to flow eastwards to the Black Sea. Enthroned above the town, there are the pilgrimage church Mariahilf on the Inn riverside and the 800 years old Fortress Veste Oberhaus on the Danube riverside. The Roman Museum Kastell Boiotro is part of the “Roman Donau Limes” which was declared UNESCO world heritage in 2021. You can find architectural masterpieces from different epochs in Passau. The prime example is St. Stephen’s Cathedral in the heart of old town. It keeps the world’s largest cathedral organ.

Passau is one of the absolute highlights of every Danube river cruise. Depending on which direction the cruise takes, Passau is usually the first or last port of call in Germany. The Old Town is in easy walking distance from the moorings. Cruise ships are able to rely on top-notch and state-of-the-art infrastructure to make your stay as convenient as possible.

There are several possibilities for getting to know the many faces of the Three Rivers City of Passau. Especially for tourist groups, there is a comprehensive offer. With the Sales & Cruise Guide we want to provide an overview for you and help you with your planning.

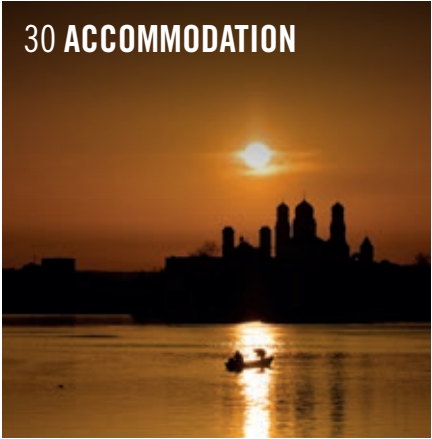
For any further information you may need, we would be more than pleased if you contact us!

YOUR GUIDE
TO A PERFECT
PLANNING.

DISCOVER PASSAU TODAY!

CONTENTS

- from page
- 04 · Accessibility
- 06 · Arrival
- 08 · Sights and Museums
- 11 · Excursions and Recurring Events
- 12 · Group Offers
 - 13 · Guided City and Themed Tours
 - 21 · Castle Tour
 - 21 · Group Events
 - 22 · Tours by bus or boat
- 24 · Food and drink
- 30 · Accommodation
- 32 · Maps
- 34 · Service





ACCESSIBILITY.

THE PERFECT GROUP DESTINATION IN THE MIDDLE OF EUROPE

Passau is not only beautifully located by three rivers: As a city in the three-country region Germany - Austria - Czech Republic, you can perfectly travel onto the neighbouring countries. Stop over in Passau to gain unforgettable impressions for your guests. Due to its proximity to the Bavarian Forest, the spa triangle ("Bäderdreieck") or the "Mühlviertel" in Upper Austria, Passau is the perfect starting point for interesting trips to the surrounding area.

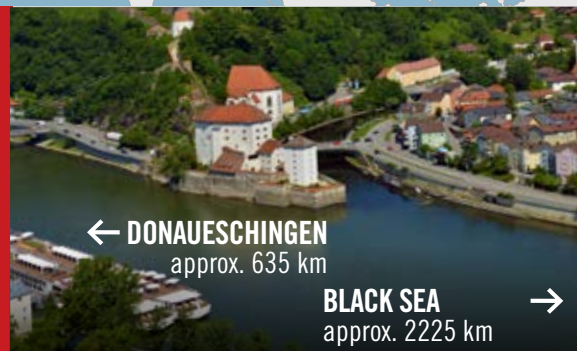
TRANSPORT CONNECTIONS

Passau's geographical position is ideal. The city is perfectly connected to both the highway system and the international high-speed railway station. Munich and Linz (Austria) airports are also close by. Passau is located directly next to the A3 freeway. ICE, IC and various regional trains all have regular connections to and from the city.

DISTANCES FROM PASSAU

Regensburg (D)	120 km	(motorway)
München (D)	191 km	(motorway)
Nürnberg (D)	220 km	(motorway)
Linz (A)	100 km	(motorway)

Salzburg (A)	120 km	(highway)
Budweis (CZ)	138 km	(highway)
Pilsen (CZ)	166 km	(highway)
Prag (CZ)	368 km	(highway & freeway)



← DONAUESCHINGEN
approx. 635 km

BLACK SEA
approx. 2225 km →

WHY PASSAU?

→ DOCK AGAINST AN INCREDIBLE BACKDROP

The majority of the city's moorings are located along the Old Town.

→ PARKING IN THE CITY CENTER

Bus parking is available directly in the Old Town and other convenient locations.

→ PERFECT LOCATION

The ideal base for excursions as well as round trips and travel-to-target trips.

→ MULTI-LINGUAL

Brochures and guided tours in several languages available.

→ HIGHLY VARIED SHOPPING OPPORTUNITIES

From shopping mall to unique little boutiques.

→ TOP SIGHTS

The world's largest cathedral organ, unique confluence of three rivers, one of Europe's biggest castle complexes and much more.

→ BAROQUE OLD TOWN

Unforgettable impressions in Passau's historical center.

→ UNIQUE CULTURAL OFFER

Passau offers arts, concerts and cabaret.

→ TRADITIONAL & MODERN CUISINE

Introduce your guests to the diverse range of restaurants.

→ AND A LOT MORE TO SEE ...

Continue to read to find out more reasons why Passau is a great destination.



OFFER SUPERLATIVES

Enthrall your guests with the world's biggest cathedral organ, one of the biggest castle complexes in Europe and lots of other impressive sights.

ST. STEPHEN'S CATHEDRAL



OBERHAUSMUSEUM



SCHAIBLINGSTURM

ARRIVAL.



BY BUS.

Explore Passau and its surrounding area. If your guests are traveling by bus, they can stop at one of our central bus parking facilities. From the Fritz-Schäffer-Promenade Parking it's just a few steps to many of the top sights. It doesn't get any more central than this.

	P ₁ FRITZ-SCHÄFFER-PROMENADE (12 SPACES)	P ₂ BAHNHOFSTRASSE (22 SPACES)
Location:	Untere Donaulände 1, Fritz-Schäffer-Promenade, directly at moorings A11 - A14, ticket machine	Regensburger Straße at B8 – near central station; vending machine in the multi-storey car park Bahnhofstraße (1st floor, at the toilets)
Opening hours:	all year, 24 h; Maximum parking period: 24 h	all year round, 24 h; Short-term and long-term parking
Distance to city center:	direct access to Old Town/pedestrian precincts; meeting point for guided group tours	Pedestrian precincts 5 - 10 mins, Old Town 15 - 20 mins, can be reached on foot or by taking the Citybus
Parking fees:	from 09:00 a.m. - 06:00 p.m., chargeable; pick-up/drop-off free of charge (15 mins)	from 09:00 a.m. - 07:00 p.m., chargeable
Infrastructure:	Information point with information cabinets, toilets, telephone; rest benches, snack bar/restaurants immediately opposite the car park	Toilets in the multi-storey car park; sanitary disposal possible

CONTACT + INFOS: Stadtwerke Passau GmbH, Regensburger Straße 29, 94036 Passau, www.stadtwerke-passau.de

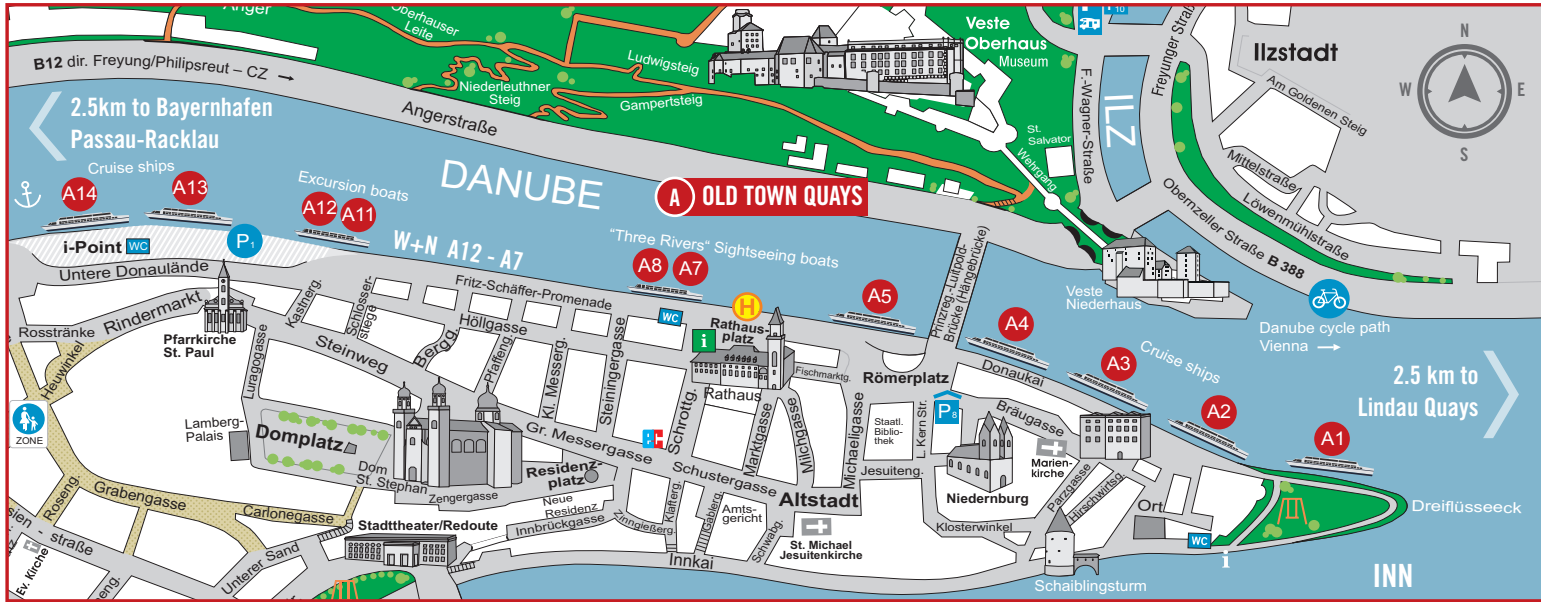


BY SHIP.

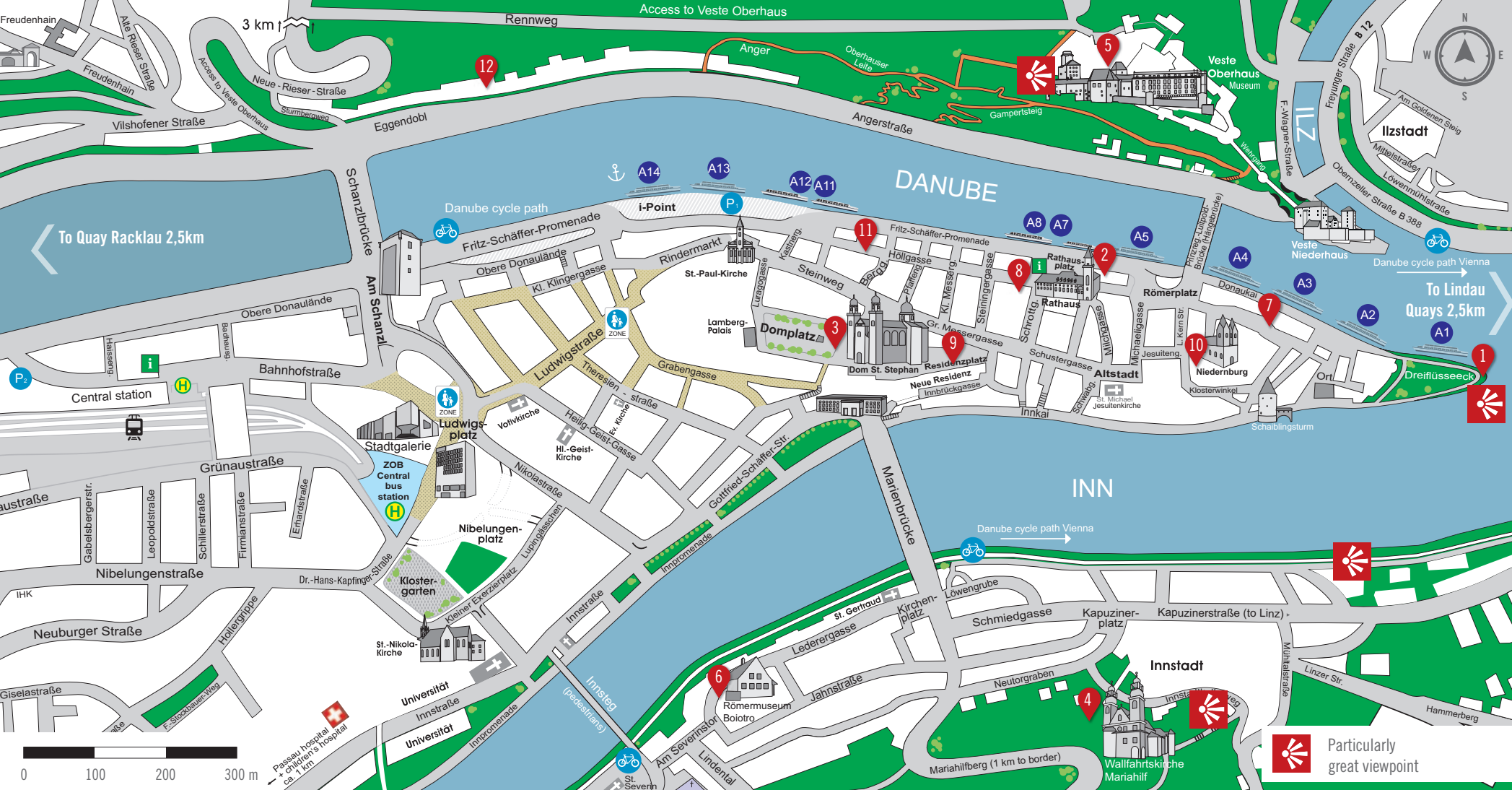
A	OLD TOWN QUAYS	RIVER KM 2225.330 – 2226.730 INFO POINT, PUBLIC WC, NUMEROUS SHOPS AND RESTAURANTS
A1	River km: 2225.330 – 2225.435 Location: Passau Old Town, Confluence Mooring system: Pontoon, no access road Max. mooring width: 25 m Infrastructure: Electricity, water	
A2	River km: 2225.435 – 2225.537 Location: Passau Old Town, Confluence Mooring system: Pontoon, no access road Max. mooring width: 25 m Infrastructure: Electricity, water, waste disposal	
A3	River km: 2225.537 – 2225.758 Location: Passau Old Town, suspension bridge / Römerplatz Mooring system: Quay wall, no access road Max. mooring width: 25 m Infrastructure: Electricity, water, waste disposal	
A4	River km: 2225.537 – 2225.758 Location: Passau Old Town, suspension bridge / Römerplatz Mooring system: Quay wall, no access road Max. mooring width: 25 m Infrastructure: Electricity, water, waste disposal	
A5	River km: 2225.758 – 2225.880 Location: Passau Old Town, suspension bridge / Römerplatz Mooring system: Quay wall, no access road Max. mooring width: 25 m Infrastructure: Electricity, water, waste disposal	
A13	River km: 2226.427 – 2226.590 Location: Passau Center, Fritz-Schäffer-Promenade Mooring system: Quay wall, only loading and unloading Max. mooring width: 36 m Infrastructure: Electricity, water, waste disposal	
A14	River km: 2226.590 – 2226.730 Location: Passau Center, Fritz-Schäffer-Promenade Mooring system: Quay wall, only loading and unloading Max. mooring width: 45 m Infrastructure: Electricity, water, waste disposal	

L	LINDAU QUAYS	RIVER KM 2222.585 – 2223.130 FRANZ-WEISMANN-STRASSE 1, INFO POINT WITH SNACK BAR, PUBLIC WC, WIFI, BUS STOP WITH CONNECTIONS TO THE OLD TOWN/CENTER, SHOPS NEARBY
L1	Location: Passau-Grubweg / Lindau Mooring system: Bulkhead and dolphin, only loading and unloading Max. mooring width: 35 m Infrastructure: Water, waste disposal	
L2	Location: Passau-Grubweg / Lindau Mooring system: Bulkhead, only loading and unloading Max. mooring width: 35 m Infrastructure: Electricity, water, waste water, waste disposal	
L3		
L4		
	FURTHER INFORMATION:	www.stadtwerke-passau.de/hafen.html

R	BAYERNHAFEN PASSAU-RACKLAU	RIVER KM 2228. RACKLAU 3A, NO PUBLIC WC AND SHOPPING FACILITIES AVAILABLE
R1	Location: Racklau, port basin entrance Mooring system: Quay wall, 2 berths Max. mooring width: 25 m Infrastructure: Water, waste disposal	
R2	Location: Racklau, port basin Mooring system: Quay wall, 3 berths Max. mooring width: 38 m Infrastructure: Water, waste disposal	



OLD TOWN QUAYS 7 moorings with 12 berths for cruise ships	L LINDAU QUAYS 4 moorings with 8 berths for cruise ships	R BAYERNHAFEN PASSAU-RACKLAU 2 moorings with 5 berths for cruise ships
--	---	---



SIGHTS AND MUSEUMS.

Passau – the city on three rivers – looks back on an eventful history that has made it the vibrant city it is today. Various eras over the last millennium have influenced the city and its inhabitants in many different ways. This colorful history is clearly reflected in the wide range of sights to be seen around town.

FURTHER INFORMATION: → tourism.passau.de/discover-passau/

1 CONJUNCTION POINT OF DANUBE, INN AND ILZ

Three rivers from three directions meet at the “Dreiflüsseeck”: Danube, Inn and Ilz offer an impressive natural spectacle. Looking downstream, you can see the black Ilz streaming into the blue-brown Danube from the left and the green Inn joining from the right.



2 OLD TOWN HALL

Built in Venetian style, the Old Town Hall is one of the most prominent buildings of Passau's Old Town. The paintings on the outside of the hall show Emperor Ludwig of Bavaria and four flag bearers (Electorate of Saxony, Electorate of Trier,

Electorate of Cologne and Duchy of Bavaria). The town hall tower is 38 meters high and houses the tourist information in the groundfloor.
MUSIC CARILLON – TOWN HALL daily 11:30 a.m., 4:30 p.m.



Contact: Ph. +49 (0)851 / 396-610
tourismus.passau.de
tourist-info@passau.de

3 ST. STEPHEN'S CATHEDRAL (ORGAN CONCERTS)

The magnificent building with its white towers and blue-green domes is the crucial baroque

church north of the Alps. The architects Carlo Lurago and Giovanni Battista Carlone gave the church their own Italian character after a fire in 1662. The ornately interior holds an exceptional treasure: the biggest cathedral organ in the world with 17,974 pipes and 233 registers.
Opening hours: daily Apr. - Oct. 6:30 a.m. - 7 p.m., Nov. - Mar. 6:30 a.m. - 6 p.m.



Organ Concerts: On Sundays and public holidays the organ is only played during services at 7:30 a.m., 9:30 a.m. and 11:30 a.m. (no organ concerts)

Concerts at noon, (duration: approx. 30 min.)

May 2 - Oct. 31: daily except Sundays and public holidays – rotating program
 Advent: Wednesday - Saturday
 The cathedral is closed from 10:45 a.m. for noon concerts, admission from 11:20 a.m.
Admission tickets: Available from 10:00 a.m. at the ticket office in the cathedral courtyard

Evening concerts, 7:30 p.m. (duration: approx. 60 min.)

May - Oct.: 1 x per month Thursday except public holidays – changing program
 The cathedral is closed for evening concerts from 6:00 p.m., admission from 6:45 p.m.
Admission tickets: Available from 6:30 p.m. at the ticket office in the cathedral courtyard
Reservation for groups from 10 people possible.

Contact: Ph. +49 (0)851 / 393-8153
www.dommusik-passau.de
dommusik@bistum-passau.de



4 PILGRIMAGE CHURCH "MARIAHILF"

High above the district Innstadt rises the baroque pilgrimage church Mariahilf with its prominent towers and the adjacent St. Paul monastery. The baroque monastery from the 17th century was of great significance as a place of pilgrimage to Saint Mary. A covered stairway with 321 steps leads up to the pilgrimage chapel. The walkway is adorned with numerous votive tablets.

Opening hours: daily 7 a.m. - 8 p.m.
Contact: Ph. +49 (0)851 / 2356
www.mariahilf-passau.de
wallfahrt@mariahilf-passau.de

5 FORTRESS "VESTE OBERHAUS" AND OBERHAUSEMUSEUM

High above Passau the Veste Oberhaus, the former residence of the prince-bishops and one of the largest surviving castle complexes in Europe, invites visitors on a journey through the centuries. Within the historic castle walls, the Oberhausmuseum presents exciting exhibitions on medieval life at the castle and the history of the city. A fabulous panoramic view of the picturesque old town and the confluence of the three rivers of Passau can be enjoyed from the observation tower and the viewpoint Batterie Linde.

Opening hours Museum:

Mar. 15 - Nov. 15: Mon. - Fri. 9 a.m. - 5 p.m.
 Sat., Sun., holidays 10 a.m. - 6 p.m.
 Dec. 25 - Jan. 6: daily 10 a.m. - 4 p.m.
 (closed on Dec. 31)

Opening hours Observation tower:

Mar. 15 - Nov. 15: Mon. - Fri. 9:30 a.m. - 4:30 p.m.
 Sat., Sun., holidays 10:30 a.m. - 5:30 p.m.
Contact: Ph. +49 (0)851 / 396-800
www.oberhausmuseum.de
oberhausmuseum@passau.de



6 ROMAN MUSEUM "KASTELL BOIOTRO"

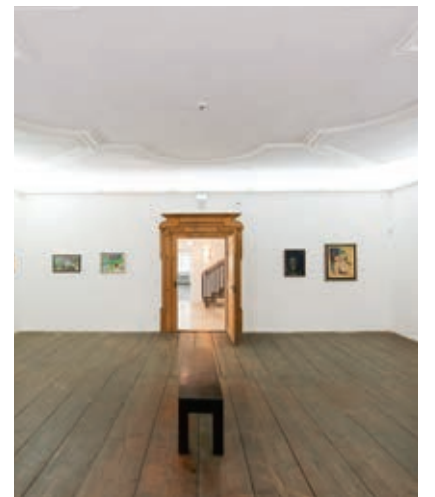
The Roman museum of the fort Boiotro occupies a late medieval house in the district Innstadt and incorporates the foundations of late Roman Boiotro: Since 2021 it is part of the UNESCO world heritage "Roman Danube Limes". The museum exhibits 600 objects. Together with references to ancient sources and numerous models these illustrate the 400 years history of Roman rule in this town on the northern frontier of the Empire.

Opening hours: Mar. 1 - Nov. 15
 Tue. - Sun. 10 a.m. - 4 p.m.
Contact: Ph. +49 (0)851 / 34769
www.stadtarchaeologie.de
boiotro@passau.de



7 MUSEUM OF MODERN ART WÖRLEN

In 1990 the Museum of Modern Art Wörlen was founded by the architect Hanns Egon Wörlen (1915-2014) in the Old Town of Passau. The museum's extensive fine arts collection, which is based on the inheritance of the painter Georg Philipp Wörlen (1886-1954), contains artworks from Expressionism to Contemporary Art. Since its founding, the MMK has shown more than 380 exhibitions.



Opening hours: all year Tue. - Sun. 10 a.m. - 6 p.m., closed on Good Friday, Christmas Eve, Christmas Day and New Years Eve
Contact: Ph. +49 (0)851 / 3838790
www.mmk-passau.de
info@mmk-passau.de

» SIGHTS AND MUSEUMS

8 PASSAU GLASS MUSEUM

The Glasmuseum Passau, designated by Friedrich Dürrenmatt as "the most beautiful glasshouse in the world", is the biggest museum on European glass worldwide and is listed in the "Cultural properties of National Significance". 15,000 pieces on display show the great art and variety of glassmaking in Bavaria, Bohemia, Austria and Silesia from 1650 to 1950.
Opening hours: mid of Feb. - Dec. 31 daily 9 a.m. - 5 p.m.
Contact: Ph. +49 (0)851 / 35071
www.glasmuseum.de
info@glasmuseum.de



9 MUSEUM AT THE CATHEDRAL

The Museum at the Passau Cathedral displays masterpieces of art ranging from the Romanesque period up to the present. The so-called major court hall was the site of the festivities celebrating the wedding of Emperor Leopold I of Austria to Eleonora, daughter of the Palatine Count and Duke of Palatine-Neuburg in 1676. Today the room is used for special exhibitions, focusing on contemporary art.



Opening hours: May 2 - Oct. 31
Mon. - Sat. 10 a.m. - 4 p.m.
closed on Sun. and holidays
Contact: Ph. +49 (0)851 / 3933331
www.bistum-passau.de
kunstreferat@bistum-passau.de

10 FRESCO MUSEUM NIEDERBURG

The fresco museum Niedernburg is a reminder of St. Mary's Church (Marienkirche – 12th century), which was destroyed by the great fires of the 17th century. The Romanesque vestibule has been preserved and with its secco paintings it is an impressive testimonial of Christian faith in the High Middle Ages. The more than 800-year-old wall paintings belong to the most valuable cultural assets of Romanesque art in southern Germany.



Opening hours: daily 10 a.m. - 6 p.m.
no technical devices in winter
Contact: Ph. +49 (0)851 / 3933331

11 "ART ALLEY" HÖLLGASSE

At the end of the 20th century various studios and decorative arts workshops moved into rooms on the ground floor in historic Höllgasse. Inspired by this, AGON Passau e.V. was founded in 2000 together with other artists of Passau. The translation of the Ancient Greek word AGON means competition. It emphasizes that the artists meet the challenge of a creative contest.



12 MEDIEVAL TORTURE MUSEUM AT ANGER

A unique collection and exhibition about the time of the Inquisition and the persecution of witches in the Middle Ages is on display in historic vaulted rooms. The ecclesiastical courts mercilessly persecuted dissidents at this time. The exhibition traces this period and shows numerous original exhibits.
Opening hours: Mar. 15 - Dec. 15 Thu. - Sun. 1 p.m. - 5 p.m., different times for groups on request
Contact: Ph. +49 (0)851 / 21338392
www.foltermuseum-passau.de
info@foltermuseum-passau.de



→ FURTHER INFORMATION AND PRICES
YOU CAN FIND ONLINE AT
TOURISM.PASSAU.DE AND IN OUR BROCHURE
"EXPERIENCE PASSAU".

» EXCURSIONS

Passau and its surrounding has a lot to offer. There are well-developed cycle paths and hiking trails, numerous golf courts, nearby ski resorts and further attractive destinations where you can relax. Let yourself be convinced by the diverse offerings.

■ HIKING

Numerous international and national hiking trails lead through Passau as there are the Donausteig, the Goldsteig and the Donaupanoramaweg.
→ tourism.passau.de/leisure-sports/hiking/

■ CYCLING

Passau is a paradise for cyclists. Thanks to local rentals, you can also discover Passau and its surrounding by bike as a day tripper. Several international cycling paths lead through the city on three rivers, e.g. the Donauradweg, the Tauernradweg and the Innradweg.
→ tourism.passau.de/leisure-sports/cycling/

■ "BÄDERDREIECK" (SPA TRIANGLE)

From Passau, it's only a short drive of 40 kilometres to the the spa triangle "Bäderdreieck" with its towns Bad Füssing - Bad Griesbach - Bad Birnbach. Besides a variety of thermal baths, Bad Griesbach also offers the biggest European golf resort.

■ INNVIERTEL AND MÜHLVIERTEL (A)

Those two regions, full of traditions, are close to Passau in Upper Austria. There you find baroque town squares, unspoilt nature as well as rural and urban structures that have grown for over thousand years.

■ MOZART CITY OF SALZBURG (A)

The world-famous Mozart City of Salzburg is only a day trip away from Passau. With its numerous sights, Salzburg guarantees an unforgettable visit.

■ ČESKÝ KRUMLOV

Ceský Krumlov's Old Town with the medieval fortress and palace has been designated UNESCO World Heritage in 1992.

■ CRYSTAL ROAD AND BAVARIAN FOREST

In the Bavarian Forest, the over 700 years old handcraft of glassblowing is still alive. Visit the world-famous glassworks and see how the fragile material is artfully crafted. The area is also famous for hiking, cross-country skiing or just for enjoying nature. You can find breathtaking and peaceful landscapes in the Bavarian Forest National Park.

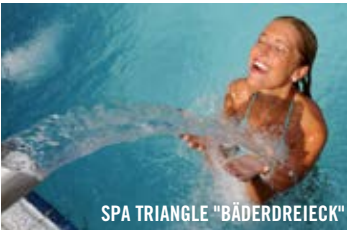
→ WE WILL BE HAPPY TO GIVE YOU ADVICE FOR YOUR INDIVIDUAL PROGRAM.
FOR FURTHER DESTINATIONS AROUND PASSAU, VISIT OUR WEBSITE TOURISM.PASSAU.DE

» RECURRING EVENTS

Jump into fun fairs, enjoy theatre and cabaret, listen to world-famous jazz musicians, celebrate street festivals: There are great events in Passau throughout the whole year – traditional and modern ones, small and big ones. Numerous stages offer artists opportunities to perform. Feel the cultural vibes in historic buildings and atmospheric courtyards, listen to music in the winding streets of Passau's old town.

The "Passauer Maidult" in spring and the "Herbstdult" at the end of summer are two of the biggest and most beautiful fun fairs in eastern Bavaria. Cabaret and music are enjoyed best in July: The "Eulenspiegel Zeltfestival" takes place at the Ortspitze, where the three rivers Danube, Inn and Ilz meet. The "Night of Arts" is another event highlight: Galleries and museums are open until late night, the streets are full of performances and light installations. In winter, Passau is looking forward to the Christmas Market at the Cathedral. The cozy market offers an entertaining program with folk music days, big band concerts, puppet theatre performances or the show of an ice artist.

→ FIND LATEST EVENT NEWS ON WWW.KALENDER.PASSAU.DE



GROUP OFFERS.



The perfect Passau-experience for your travel group: Our group providers are experts in showing the beauty and diversity of the THREE_RIVERS_CITY in an exciting way. Find numerous group offerings on the following pages. **For further information and pricing, please contact the respective provider.**

Individual visitors can also discover Passau by foot, boat or bus. Get an overview of offerings for individual guests in the brochure “EXPERIENCE PASSAU” and online: tourism.passau.de/discover-passau/guided-tours-cruises/

Providers Name / Adress	No.		www	E-Mail	Languages
ARBEITSGEMEINSCHAFT STADTFÜHRUNGEN PASSAU (Anne Schopper) Lindenstraße 10 94036 Passau	1	+49 (0)151 / 50455961	www.arbeitsgemeinschaft-stadtfuehrungen-passau.de	arge@stadtfuehrungen-passau.de	D
DIE FESTMACHER - Sander+Scharinger GmbH Bärenholzweg 9 94113 Tiefenbach	2	+49 (0)8509 / 9377685	www.festmacher-passau.de	info@festmacher-passau.de	D/GB/F/I/E/CZ/R
DONAU-SCHIFFS-REISE-CENTER, HELMUT ECKERL E.K. Kastnergasse 1 94032 Passau	3	+49 (0)851 / 34262	www.donau-schiffs-reise-center.de	info@d-s-r-c.de	D/GB
DONAUGUIDES (Sebastian Frankenberger) Vornholzstr. 53 94036 Passau	4	+49 (0)151 / 41980420	www.donauguides.com	info@donauguides.com	D/GB/F/I/E/CZ/HU/R/NL/CH/I/PT
DONAUSCHIFFFAHRT WURM & NOÉ GMBH & CO. KG Höllgasse 26 94032 Passau	5	+49 (0)851 / 929292	www.donauschiffahrt.eu	info@donauschiffahrt.eu	D/GB
DREIFLÜSSE TOURS (Anneliese und Hilmar Hertel) Am Wimhof 48 94034 Passau	6	+49 (0)851 / 57581	www.dreifluesse-tours.de	info@dreifluesse-tours.de	D
JOURNEY GASTRO GMBH Schustergasse 1 94032 Passau	7	+49 (0)851 / 98901547	www.journey-passau.de	info@journey-passau.de	D
PASSAU GUIDES (Eichberger Schiffservice GmbH) Messestraße 6 94036 Passau	8	+49 (0)851 / 989000220	www.passau-guides.com	passau-guides@globus-group.de	D/GB/E/I
PASSAU-VISIT (Franz und Barbara Kreilingner) Sechzehnerstrasse 1a 94032 Passau	9	+49 (0)851 / 73426	www.passau-visit.de	info@passau-visit.de	D
PASSAUER STADTFUCHS-TOUREN (Matthias Koopmann M.A.) Lindental 46c 94032 Passau	10	+49 (0)851 / 45892 +49 (0)151 / 44667551	www.stadtfuchs-passau.de	stadtfuchspassau@aol.com	D/GB
PASSAU-TOURS GmbH & Co. KG Sechzehnerstrasse 6c 94032 Passau	11	+49 (0)851 / 20986068	www.passau-tours.com	info@passau-tours.com	D/GB/F/E/I/HU/CH
TOPASSAU GmbH & Co. KG Hermann-Mayrhofer-Str. 15 94036 Passau	12	+49 (0) 157 33221523	www.topassau.de	info@topassau.de	D/GB/E/I
VESTE OBERHAUS OBERHAUSEMUSEUM Oberhaus 125 94034 Passau	13	+49 (0)851 / 396800	www.oberhausmuseum.de	oberhausmuseum@passau.de	D/GB

» GUIDED CITY AND THEMED TOURS

PASSAU "CLASSIC" - "ENTERTAINING" - "ART HISTORICAL"

Yesterday and today - lively, entertaining and exciting. A unique journey through time through 2000 years of history at the confluence of the Danube, Inn and Ilz rivers - narrow streets - wide squares with an Italian-Baroque flair await your guests. History and stories about the people who lived and live here.

Nice anecdotes are not neglected.



Provider: ARBEITSGEMEINSCHAFT STADTFÜHRUNGEN PASSAU
Duration: min 1:30 hrs.
Participants: 2 to 25 pers. per guide

PASSAU - I'LL SHOW YOU

Passau is cosmopolitan and yet so Bavarian, modern and yet so traditional, young and yet so steeped in history. Passau, my city - how it was, how it is and how it will be forever- colorful and lovely. Have a look - I'll show you



DIE FESTMACHER
KULTUR- UND TOURISTIKSERVICE

Provider: DIE FESTMACHER - Sander+Scharinger GmbH
Duration: 1 hrs.
Participants: 5 to 25 pers. per guide

BAVARIAN PUB-TOUR

From then until today the pub culture is very much alive. Sitting together, eating and drinking together, making music together and having fun - that is part of everyday life in Bavaria.

After a guided walk through the old town, you will go to a Bavarian inn. Experience the 800 year history of Passau beer and entertaining Bavarian traditions. A Bavarian folkloric pub music will play for you. Get into mood and enjoy a free beer and an oven-fresh pretzel.

This tour can be combined with our city tour "Passau - I'll Show You".



DIE FESTMACHER
KULTUR- UND TOURISTIKSERVICE

Provider: DIE FESTMACHER - SANDER+SCHARINGER GMBH
Duration: 2 hrs.
Participants: 20 to 50 pers. per guide

» GUIDED CITY AND THEMED TOURS

PASSAU CLASSICAL TOUR

During this guided walk through Old Town Passau you'll hear amusing stories about the former prince bishops and their Upper House.

After Town Hall square with the highest highwater marks you'll get to the renowned executioner's (Scharfrichter) house with its comedians. Along the sunny Inn river you'll find out about the emperial wedding anecdotes before you will be strolling in the romantic alleys across the italian-looking Residence square with many souvenir shopping opportunities up to St.Steven's cathedral with the largest catholic church organ in the world.



Provider: DONAUGUIDES
(Sebastian Frankenberger)
Duration: max 2 hrs.
Participants: max. 25 pers. per guide

HISTORY THROUGH STORIES EXCLUSIVELY IN GERMAN

If you are searching for a run-of-the mill guided tour, we are not what you are looking for.

Born and raised in Passau we offer guided tours in Passau and its surroundings, tailor-made for you group's interests.

Our tour will take you through the historical Old Town, past sights like the cathedral, the bishops' residences, the Wittelsbacher fountain, down alleys to the river Inn, and to the Town Hall Square at the Danube. We would love to show you our beautiful home town and are looking forward to meeting you soon.



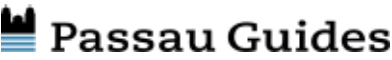
Provider: DREIFLÜSSE TOURS
(Anneliese and Hilmar Hertel)
Duration: on request
Participants: max. 30 pers. per guide

VARIOUS WALKING TOURS

Join us on an interesting walk through the charming old town of Passau.

Located on three rivers, built in baroque style, Passau has always been a magnet for traders and travelers.

The unique flair of winding streets and baroque squares will inspire you from the first moment. Our qualified city guides will be happy to show you our "Bavarian Venice".



Provider: PASSAU GUIDES
(Eichberger Schiffservice GmbH)
Duration: 1:30 hrs.
Participants: 5 to 35 pers. per guide

» GUIDED CITY AND THEMED TOURS

CITY TOUR IN GERMAN LANGUAGE

Experience our episcopal city of Passau and immerse yourself in the history of the beautiful old town on an individual tour for German-speaking guests with native and local guides.

Listen to anecdotes and stories about the border town on the Three Rivers. Get information about the location and economy in the region. Visit with us the baroque buildings, marvel at the Bavarian Venice and enjoy the cozy atmosphere of our city Passau. Further information can be found on our homepage, impressions you will find on Instagram passau.view.



Provider: PASSAU VISIT
(Franz and Barbara Kreiling)
Duration: min. 1:30 hrs.
Participants: max. 30 pers. per guide

PASSAU - GLORY & MISERY

An exciting drama-tour will take you back to medieval and baroque times: Court-adviser Sir Hörnigk or court-pharmacist Maria Anna Röttler presenting you the eventful history and the impressive buildings of the so called Bavarian Venice.

Discover and understand Passau away from all common stereotypes. An extraordinary experience that will inspire you and makes Passau unforgettable!



Provider: PASSAUER STADTFUCHS-TOUREN
(Matthias Koopmann M.A.)
Duration: 1 to 2 hrs.
Participants: max. 30 pers. per guide

MEETINGS WITH PASSAUS HISTORY

A particularly eventful and fascinating spectacle arrangement.

Exciting meetings with very different characters of Passau's history: So an episcopal knight tries to prevent new uprisings, the Italian cathedral-architect Lurago has to solve big problems, Anna Maria Mozart is outraged by an absolutely disappointing visit...

On request, the arrangement can be combined with culinary delicacies at a baroque market stall or in an artist's studio.



Provider: PASSAUER STADTFUCHS-TOUREN
(Matthias Koopmann M.A.)
Duration: 1:30 to 3 hrs.
Arrangement: max. 240 pers.

» GUIDED CITY AND THEMED TOURS

PASSAU’S CATHEDRAL - MESSAGE & MASTERPIECE

Don't just marvel at the largest baroque cathedral north of the Alps, but learn to read and understand properly!

What content does the baroque splendor convey? What problems did builders and artists have to deal with? Art historian Matthias Koopmann reveals the fascinating history of St. Stephen's Cathedral in a captivating and lively way.



Provider: PASSAUER STADTFUCHS-TOUREN
(Matthias Koopmann M.A.)
Duration: 1 to 2 hrs.
Participants: max. 30 pers. per guide

PASSAU’S TRAGEDIES

A terribly cheerful drama-tour and absolutely current: Again and again, Passau was hit by the worst catastrophes, and its citizens suffered terrible fears.

Follow a plague doctor through churches, monasteries and alleys to the traces and locations of past tragedies. And should it become dangerous - don't worry: He will surely save you ...



Provider: PASSAUER STADTFUCHS-TOUREN
(Matthias Koopmann M.A.)
Duration: 1 to 2 hrs.
Participants: max. 30 pers. per guide

THE "LINDL" - PASSAU'S NIGHT-WATCHMAN

A cheerful-thrilling drama-tour:

A night-watchman roams with you through the romantically lit bavarian Venice, complains about lewd woman and seeks a brave assistant. Follow him in the footsteps of lawbreakers and rebellions, of Jewish and episcopal destinies. But watch out - you are closely linked to the action.

2001-2020 Stadtfuchs-Touren: 20 years succes with history! We don't talk about events - we guarantee them...



Provider: PASSAUER STADTFUCHS-TOUREN
(Matthias Koopmann M.A.)
Duration: 1 to 2 hrs.
Participants: max. 30 pers. per guide

» GUIDED CITY AND THEMED TOURS

THE SUN, THE MOON AND ... PASSAU!

An asteroid called Passau and a planetary-path in the three-river-town? What's behind it? How could a monk from Passau outshine Keppler and Galileo? Did Passau's princebishops deal with astronomy and alchemy? What connects the sun and the cathedral?

Jesuit-Father Christoph Schreiner presents an unknown world of Passau's history... A new drama-tour to the stars!



Provider: PASSAUER STADTFUCHS-TOUREN
(Matthias Koopmann M.A.)
Duration: 1 to 2 hrs.
Participants: max. 30 pers. per guide

THE CLASSICS OF PASSAU – WHERE DANUBE, INN AND ILZ UNITE PEOPLE

More than 2000 years ago, early settlers chose this unique spot between three rivers as their safe haven. Traders and craftsmen, clergy and Princebishops influenced and shaped the daily life in this fascinating city over many centuries. Discover the splendid past and multi-faceted present of the city also called „Bavarian Venice“.

Join us on our journey throughout centuries, passing the most important sights like St. Stephan’s cathedral with its famous organ, the episcopal palaces as well as the city hall with its flood marks. Listen to intriguing facts and anecdotes while strolling along the narrow lanes and hidden courtyards. Enjoy magnificent views of the pilgrimage church Mariahilf or the upper castle „Veste Oberhaus“ and let the baroque joy of living enchant you!

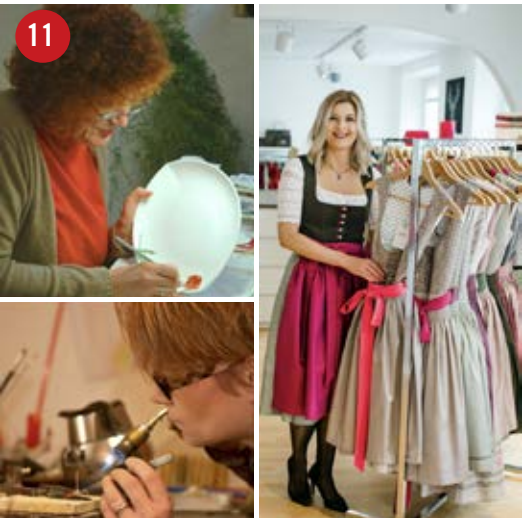


Provider: PASSAU-TOURS GMBH & CO. KG
Duration: 1,5 hrs.
Participants: 4 to 25 pers. per guide

OBSERVING CRAFTSPEOPLE AT WORK

Combine your city walking tour with a visit of craftspeople and watch them work in their work-shops: a goldsmith, a potter, a porcelain painter, a dirndl designer or a bookbinder and paper creator. You could also visit a chocolatier and create your own chocolate candy under his observing eyes. Please let us know of any food allergies and we will try to meet your needs.

It is also possible to only visit one artisan or the chocolatier in combination with a city walking tour. Note: The craftspeople will not always be available, so that we cannot promise to visit the exact artisan of your choice - but each and every one is very special in his/her own way!



Provider: PASSAU-TOURS GMBH & CO. KG
Duration: 2 to 2:30 hrs.
Participants: max. 12 pers. per guide

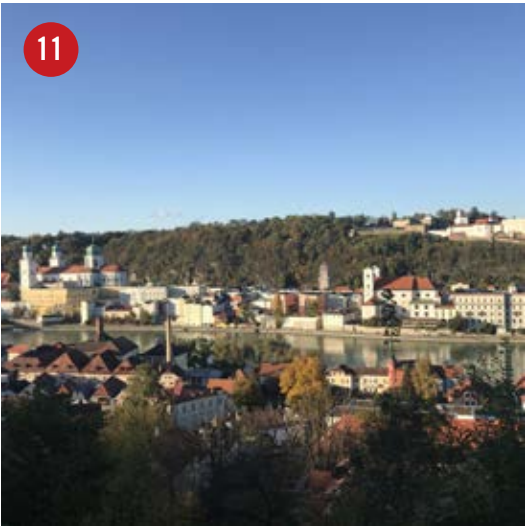
» GUIDED CITY AND THEMED TOURS

HIKE ACROSS VALLEYS AND HILLS - WHERE NATURE MEETS CULTURE - INNSTADT OF PASSAU

This journey through centuries starts where millers used to produce flour for the daily bread on their ship-mills.

The hike up to Maria Hilf is rewarded with a spectacular view over Passau. Sometimes we can even see the hills and mountains of the Bavarian Forest.

Have you ever listened to the humming of bees in a 100-year-Avenue of Lindentrees or smelled the sweetness of their blossoms? The Lindenthal leads us back to the former city walls which used to protect the city against enemies of all kinds. We'll pass the former Roman Castle Boiotro (border between two Roman Provinces 2000 years ago) and the workplaces of medieval craftsmen on winding alleys back to the marketplace of the Innstadt.



PASSAU
TOURS

Provider: PASSAU-TOURS GMBH & CO. KG
Duration: 2,5 hrs.
Participants: 4 to 25 pers. per guide

STROLL ALONG THE INN WHILE ENJOYING THE MOST PICTORESQUE VIEWS OF PASSAU

Two bridges join the heart of Passau with its St. Stephan's cathedral as well as both palaces of the prince bishops and the so-called „Innstadt“, origin of the Roman settlement in Passau and home of blacksmiths, tanners and tawers as well as ship millers during centuries long past.

Narrow and winding alleys are awaiting you while discovering traces of Romans and traditional craftsmen. Get a feel of the way of life during medieval times and the spirit of Baroque architecture.

Enjoy magnificent views of the city, the pilgrimage church Mariahilf and fortress.



PASSAU
TOURS

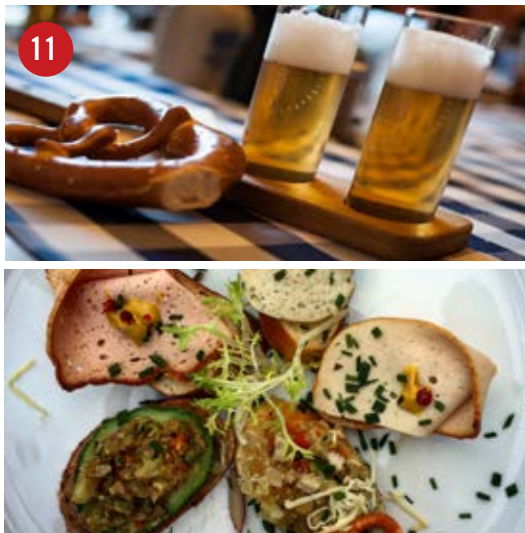
Provider: PASSAU-TOURS GMBH & CO. KG
Duration: 2 hrs.
Participants: 4 to 25 pers. per guide

ALL ABOUT BEER AND „BAVARIAN SCHMANKERL“

Did you know that the Bavarian Purity Law of beer is more than 500 years old and is still applied? Learn and see how beer is produced, but also hear stories about the history of beer and – of course - also get a taste of it and sample traditional Bavarian food called „Schmankerl“ from local purveyors.

You will hear interesting stories and tales of Passau's past and present, while strolling through our city and passing the most important sights. We have chosen unique places for your visit.

On special occasions we can even activate the unique „beer fountain of Passau“ for you! Cheers! Special requirements: Please let us know of any allergies and we will try to do our best to meet your needs.



PASSAU
TOURS

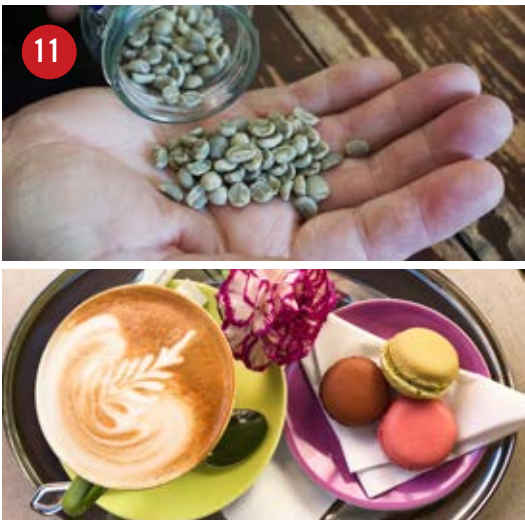
Provider: PASSAU-TOURS GMBH & CO. KG
Duration: 2 to 2:30 hrs.
Participants: 4 to 25 pers. per guide

» GUIDED CITY AND THEMED TOURS

A TASTE OF COFFEE: THE STORY AND HISTORY OF COFFEE IN PASSAU

Did you know that the story of coffee in Passau dates back more than 300 years?

During this tour, you'll get an overview of the last 3 centuries of coffee house culture in Passau, but you will also hear lots of stories and anecdotes around this special brew and last, but not least, will learn from professionals about the “perfect” coffee of today, how it is prepared and – of course - how it tastes accompanied with small treats to eat.



PASSAU
TOURS

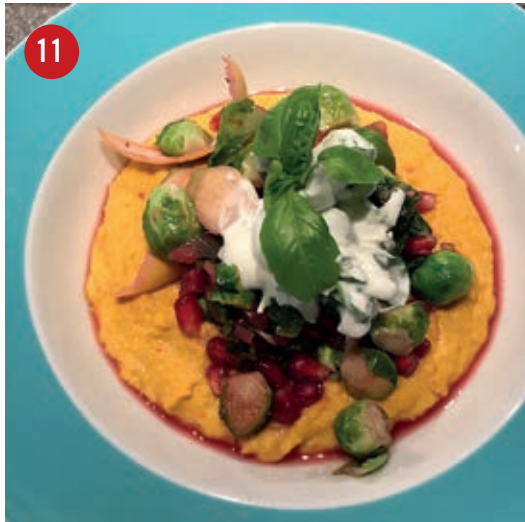
Provider: PASSAU-TOURS GMBH & CO. KG
Duration: 2:30 hrs.
Participants: max. 12 pers. per guide

CULINARY DELIGHTS BIO-VE-NAL: TRADITIONAL AND TRENDY

Explore Passau sustainably with our organic vegetarian tour:

5 culinary vegetarian delicacies, created from organically grown products from the Genussregion of Lower Bavaria served in special Passau restaurants await you on our leisurely city tour through tradition and modernity.

Immerse yourself in the life of the past and present and enjoy Passau with all your senses!



PASSAU
TOURS

Provider: PASSAU-TOURS GMBH & CO. KG
Duration: 3 hrs.
Participants: 4 to 15 pers. per guide

WINE AND MERCHANTS - CULINARY TOUR SOUTH OF THE INN RIVER

For centuries, Passau was not only famous for its trade in salt, but also provided a wonderful supply of wine.

Set out with us and explore the more than 2000-year history of wine south of the Inn river in Passau from the Romans until today.

But don't worry: you won't just hear about long-gone wine taverns and the stories about them, you may also taste various wines and snacks along the way... in a way a historical drink to go...



PASSAU
TOURS

Provider: PASSAU-TOURS GMBH & CO. KG
Duration: 1:30 hrs.
Participants: max. 20 pers. per guide

» GUIDED CITY AND THEMED TOURS

PASSAU-TOUR FOR FAMILIES WITH SMALL CHILDREN UP TO 12 YEARS: “JUNIOR PROFESSORS OF HISTORY”

Join us on our journey back in time – meet Romans and knights, learn about the big fire that destroyed most of Passau in 1662 and look masons over the shoulder during the baroque reconstruction of the city.

The children discover little details and get to know different styles of architecture, but also learn about rocks and floods. Everything in a very entertaining manner – edutainment at its best!





Provider: PASSAU-TOURS GMBH & CO. KG

Duration: 1:30 hrs.

Participants: max. 20 pers. per guide

FOOD ON FOOT TOUR

This is a tour for the taste buds where culinary specialties of Passau go along with entertaining stories about Passau and its history and culture.

Follow the guide through our lovely old town and grab a local drink or small bite to eat on the way. We will be happy to customize our 5 culinary stops to your preferences.





klassisch | kulinarisch | aktiv

Provider: TOPASSAU GMBH & CO. KG

Duration: 2 hrs.

Participants: 6 to 25 pers. per guide

SCAVENGER HUNT

Explore the hidden alleyways of Passau by this fun treasure hunt. You will not only find little gifts but also learn about Passau and its history.





klassisch | kulinarisch | aktiv

Provider: TOPASSAU GMBH & CO. KG

Duration: 2 hrs.

Participants: 6 to 20 pers. per guide

» CASTLE TOUR

CASTLE TOUR VESTE OBERHAUS

Discover one of the largest preserved castle complexes in Europe and learn exciting details about its 800-year history - from the Middle Ages to the Renaissance, the Baroque and the 20th century.

Marvel at the frescoes inside St George's Chapel and enjoy the stunning view over the old town and the confluence of the three Passau rivers.





Provider: VESTE OBERHAUS | OBERHAUSEMUSEUM

Duration: 1 h.

Participants: 1 to 30 pers. per guide

» GROUP EVENTS

BAVARIA LIVE

BAVARIA live - The Most Bavarian Place in Town

Experience a Bavarian cult-fest in a quaint traditional setting. Local musicians play local and maybe extraordinary instruments, schuhplattler, yodeling and lot's of fun - that's BAVARIA live.

Excellent Bavarian food like brats, kraut und brezen and - of course - our world famous beer will tickle every taste bud.





Provider: DIE FESTMACHER - SANDER+SCHARINGER GMBH

Duration: 2 hrs.

Participants: 30 to 200 pers.


COCKTAIL WORKSHOP AND LIQUOR SEMINAR

Diverse, surprising and exceptional!

With passion, ambition and a longtime experience Hubert Scheungraber presents you the complexity of flavors based on various liquors or tasty combinations in delicate cocktails at the Journey Cocktailbar workshops.

Gin, Rum or Whisk(e)y – Tastings as well as classic, modern or molecular cocktail workshops: liquid “Bonne Bouche” is his specialty.





Provider: JOURNEY GASTRO GMBH

Duration: 2 to 4 hrs.

Participants: 6 to 30 pers.

» TOURS BY BUS OR BOAT

TOUR WITH THE CONVERTIBLE-BUS... EXCITING AND INFORMATIVE...

Experience an exciting and informative tour through Passau in our new convertible-bus.

A short photo stop at the Veste Oberhaus shows you an unforgettable view over the historic city. Further Information on our homepage or in our travel agency.



Provider: DONAU-SCHIFFS-REISE-CENTER,
HELMUT ECKERL E.K.
Duration: about 1:15 hrs.
Participants: 4 to 28 pers.

THE THREE RIVERS PANORAMIC TOUR

Come with us to our favorite places on Passau's 3 rivers. We will take you into the untouched nature along the Ilz, show you technical masterpieces along the Danube and discover extraordinary old town panoramas along the Inn.

During the 2-hour round trip, our city guide invites you to take a short optional walk at each of the stops. And if you get a hankering for a drink after so many rivers, you can look forward to a little surprise at the end.



Provider: TOPASSAU GMBH & CO.KG IN CO-OPERATION
WITH DONAU-SCHIFFS-REISE-CENTER,
HELMUT ECKERL E.K.
Duration: 2 hrs.
Participants: 10 to 30 pers.

THREE RIVERS SIGHTSEEING TOUR

Enjoy an unforgettable view of Passau with its Italian flair and colorful buildings. See St. Stephan's Cathedral, the confluence of the three rivers Danube, Inn and Ilz, Oberhaus Castle and the Monastery Maria Hilf. You will also obtain interesting information about the city via loudspeakers!



Provider: DONAUSCHIFFFAHRT WURM & NOÉ
GMBH & CO. KG
Duration: about. 45 min.
Participants: not limited

» TOURS BY BUS OR BOAT

EVENTFUL ROUNTRIP WITH THE CRYSTAL SHIP – EXCLUSIVELY MADE WITH SWAROVSKI CRYSTALS

Come aboard of the Crystal Ship – Exclusively made with Swarovski Crystals:

On this two-hour tour from Passau to Kasten, Obernzell and back you will be enchanted by the magic of the water, the world of Crystals and the romantic river landscape!



Provider: DONAUSCHIFFFAHRT WURM & NOÉ
GMBH & CO. KG
Duration: 2 hr.
Participants: max. 380 pers.

BAREFOOT PASSAU XL

Explore the three rivers in the best kind of way – by the waterside! And therefore we have a new and unique ship: The Barefoot Boat by Til Schweiger has an exciting atmosphere of wellness and naturalness.

Take a seat and enjoy a wonderful sightseeing tour along the old part of Passau and downwards to the idyllic Danube valley.

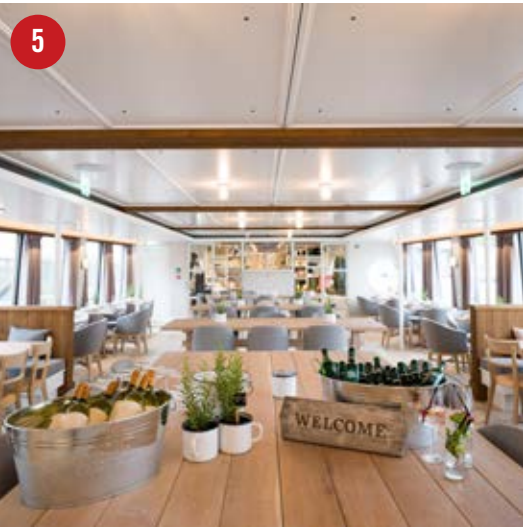


Provider: DONAUSCHIFFFAHRT WURM & NOÉ
GMBH & CO. KG
Duration: 1:15 hrs.
Participants: max. 300 pers.

BAREFOOT LOCK TOUR

Your time-out upon the Danube: The Barefoot Boat by Til Schweiger is your new happy place and takes you on a relaxed 4 hours trip from Passau to Engelhartzell with an impressive crossing of the lock in Jochenstein.

Take a seat on board, enjoy a drink or delicious meal and recharge your batteries!



Provider: DONAUSCHIFFFAHRT WURM & NOÉ
GMBH & CO. KG
Duration: 4 hr.
Participants: max. 300 pers.

FOOD
AND
DRINK.



	No.		Seats	Seats			Seats		Parking bus	Information and closing days
Name /Address		+49 (0)851 /	inside	R	SR	Hall	G	TE		
RESTAURANTS, TAVERNS, BARS & CAFES										
AM PAULUSBOGEN Rindermarkt 2, 94032 Passau www.ampaulusbogen.de info@ampaulusbogen.de	A	931060	70	–	–	–	–	80	bus 20 m	Open daily: 12 a.m. - 11 p.m.
BLAUER BOCK Höllgasse 20, 94032 Passau www.hotel-blauerbock.de info@hotel-blauerbock.de	B	7566650	131	71	–	60	–	97	bus 50 m	closed on Mon. + Tue.
CAFÉ SIMON - CONDITOREI-CONFISERIE Rindermarkt 10 + Stadtgalerie Bahnhofstraße, 94032 Passau www.simon-passau.de pralinen@simon-passau.de	C	3838850	90	90	–	–	100		–	Conditorei, Confiserie
DAS OBERHAUS Oberhaus 1, 94034 Passau www.dasoberhaus.com info@dasoberhaus.com	D	37930657	–	90	65/65	130	350	40	bus 100 m	Augustiner Bräu, great view, regional cuisine
GOLDENES SCHIFF Unterer Sand 8, 94032 Passau www.goldeneschiff.de goldenes-schiff@web.de	E	34407	–	80	–	–	50	50	–	Restaurant with sunny terrace and cozy beergarden, organic/SlowFood certified. Daily open 11 a.m.–12 a.m., Sun. 11 a.m.–3 p.m.
JOURNEY COCKTAILBAR Schustergasse 1, 94032 Passau www.journey-passau.de info@journey-passau.de	F	98901547	60	60	–	–	–	25	–	Sun. - Thu. 7 p.m. - 2 a.m., Fri. / Sat. 7 p.m. - 3 a.m.
RATSKELLER PASSAU Rathausplatz 2, 94032 Passau www.ratskellerpassau.de info@ratskeller-passau.de	G	37939050	–	60	25	30	–	350	bus 300 m	Real Bavarian "Wirtshaus"-culture in the historic Ratskeller with a view of the Danube and the Veste Oberhaus.
RESTAURANT "HL.-GEIST-STIFT-SCHENKE" Heiliggeistgasse 4, 94032 Passau www.stiftskeller-passau.de info@stiftskeller-passau.de	H	2607	210	100	30	80	150		–	regional delicacies, self-produced wines, closed on Wed. + Thu.
RESTAURANT POMERANZ Bratfischwinkel 5, 94032 Passau www.pomeranz-passau.de restaurant@pomeranz-passau.de	I	96669644	–	45	–	–	30	25	bus 300 m	
RISTORANTE ZI'TERESA Theresienstr. 26, 94032 Passau www.zi-teresa.de info@zi-teresa.de	J	2138	125	80	45	–	170	–	bus 600 m	closed on Tue. + Wed.
STRAWANZER Rindermarkt 9, 94032 Passau www.strawanzerpassau.de info@strawanzerpassau.de	K	96698808	35	–	–	–	–	35	–	Augustiner draught beer, October - April: Wednesday closed, January - March: Monday, Tuesday, Wednesday closed
TRADITIONSWIRTSHAUS KÖNIGLICH BAYRISCH Höllgasse 22, 94032 Passau www.koeniglich-bayrisch-passau.de info@d-s-r-c.de	L	9664795	125	100	25	–	–	50	bus 100 m	trad. bavarian cooking, barrier-free access, warm meals served all day, open every day from 01.04. - 31.10.
VOGL AUF DER RIES Rennweg 1, 94032 Passau www.vogl-ries.de info@vogl-ries.de	M	53753	670	50	40	180/ 400	200	–	10 m	open on Sun. and 1st Fri. of the month
"WEINGUT" RESTAURANT.WEINBAR.VINOTHEK Theresienstr. 28, 94032 Passau www.weingut-passau.de erleben@weingut-passau.de	N	37930500	62	50	12	–	60	–		Wine shop, nice outdoor area (summer), Tue. - Sat. open from 5:30 p.m.
WIRTSHAUS ANDORFER Rennweg 2, 94034 Passau www.andorfer-weissbraeu.de wirtshaus@andorfer-weissbraeu.de	O	754444	320	–	5 x 40	120	280	–	bus right upfront	Cosy parlors, sunny beergarden, bavarian goodies, closed on Mon. + Tue.

R = Restaurant, SR = Sideroom, G = Garden, TE = Terrace

Without any claim to completeness.

» FOOD AND DRINK

AM PAULUSBOGEN

Enjoy your food with beautiful view of the Danube river, the castel „Oberhaus“ and the cathedral „St. Stephan“. During the day we offer a coffee-shop-concept with freshly prepared snacks, delicious drinks, as well as coffee and cake. At 5 o'clock „Am Paulusbogen“ transfers to a chic á la carte restaurant wish delicious dishes.



BLAUER BOCK

In a prime location in the old town, the newly opened restaurant is located in the nostalgic building directly above the river promenade near the town hall. Large windows and the fantastic terrace provide an impressive view of the Donau and Oberhaus. The refined furnishings made of fine materials, as well as an elegant banquet room and a conference room with modern equipment, give the restaurant a unique ambience. The kitchen is creative, bavarian, modern and above all very delicious! Great wine and cocktail list.

- Best location with terrace, near town hall above the river promenade
- Great atmosphere and fantastic view
- Creative kitchen with bavarian delicacies and theme weeks



CONFISERIE & CAFÉ SIMON

Immerse yourself in the world of Simon's chocolates. Enjoy a range of chocolates, marzipan, nougat, nuts, almonds and the very finest liquors – all to absolute perfection. Come and visit Confiserie Simon – our delicacies will melt in your mouth!

- homemade cakes and pies
- homemade ice cream specialties
- artisan chocolates and pralines



» FOOD AND DRINK

DAS OBERHAUS

Passau at your feet! The ultimate culinary experience over the rooftops of the city! Our terrace and large windows give guests a superb view across the "Venice of Bavaria" and the enchanting landscape that surrounds it. Bavarian comfort food meets modern cuisine. Offering classic Bavarian cooking with a twist, DAS OBERHAUS is both a traditional tavern and a modern restaurant! Special Events: Bavarian Evening, Whiskey Tasting, "Reindlessen", "Steckerlfisch", "Weißwurst-Frühschoppen" and much more...

- Augustiner Bräu restaurant
- baquet hall, beergarden & free parking
- great view

Das **OBERHAUS**
FEICHTINGER



GOLDENES SCHIFF

The "Goldenes Schiff" near the Passau Cathedral, along with the small, dreamy beer garden and cozy sun-terrace, is an insider tip among Passau gourmets. It is Slow Food and partially organic certified. The Golden Ship is the ideal address for bicycle tourists, hikers and city visitors.


GOLDENES SCHIFF
Gasthaus & Pension



JOURNEY COCKTAILBAR

Located in the iconic old town of Passau, the „Journey Cocktailbar“ invites you to feel comfortable, relaxed and makes sure you enjoy every moment of your visit. A welcoming ambiance created by a combination of modern interior, original ancient stone walls set in a middle-aged vault and an appealing light installation underlines your stay. The cocktail menu includes both well-known classic drinks and modern drinks as well as individual creations of our mixologists. In addition, we carry a reasonable yet sophisticated selection of wine, beer, non-alcoholic drinks and a broad diversity of liquors for every occasion. To "lay a foundation" we keep cold snacks ready for your delightful evening in our rooms where people of every age meet and enjoy their personal journey.

Y
JOURNEY
PASSAU ALTSTADT
Cocktailbar



» FOOD AND DRINK

RATSKELLER PASSAU

"Gemütlichkeit" & beer culture in a prime location: The "Ratskeller" skilfully combines a bavarian cuisine with a historical atmosphere and at the same time makes Passau beer culture tangible. From the Danube terrace you can enjoy the view of the Veste Oberhaus. Treat yourself to local beer specialties from the Löwenbrauerei Passau and try our Bavarian delicacies.

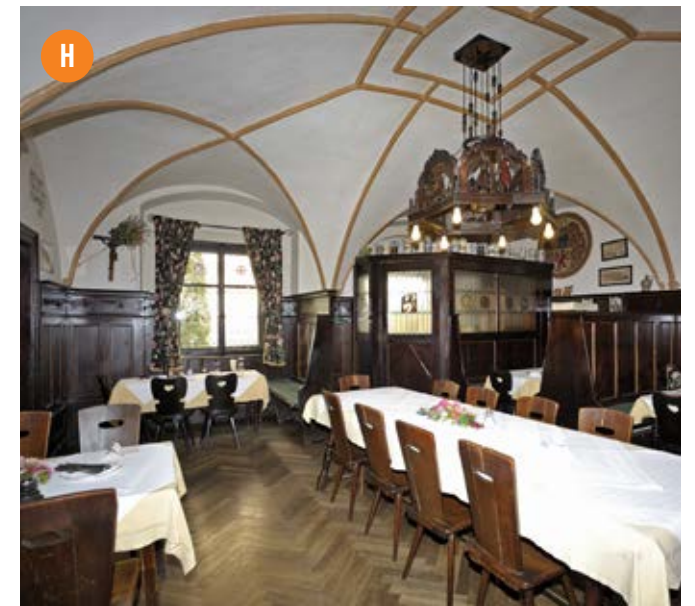

RATSKELLER
PASSAU



RESTAURANT "HL.-GEIST-STIFT-SCHENKE"

This historic Passau tavern with its vaulted cellar and garden has been the perfect place to enjoy wine since 1358.

- own wines and fresh fish
- regional and rural specialties
- Bavarian-Austrian desserts
- at the beginning of the pedestrian area
- English spoken



RESTAURANT POMERANZ

The Pomeranz restaurant is located in the pedestrian zone near the Danube. When the weather is fine, you can sit outside in the lovely quiet courtyard or on the beautiful terrace facing the pedestrian zone. The Mediterranean dishes are always freshly prepared with natural spices and no flavor enhancers. The fish dishes are particularly popular. But meat lovers, vegetarians and vegans will also get their money's worth.

- Fresh Mediterranean cuisine
- Beautiful inner courtyard or terrace
- Located in the pedestrian zone

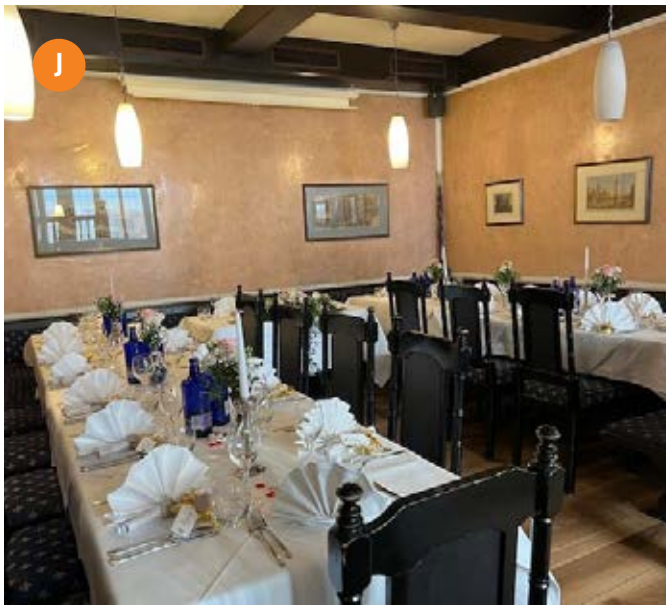

POMERANZ
MEDITERRAN · LEICHT



» FOOD AND DRINK

RISTORANTE ZI'TERESA

Since 1972 in Passau - italian specialties, homemade pasta and gnocchi, local products. We can also accommodate larger groups. Thu. - Mon. open from 11:30 a.m. to 11:30 p.m.



STRAWANZER

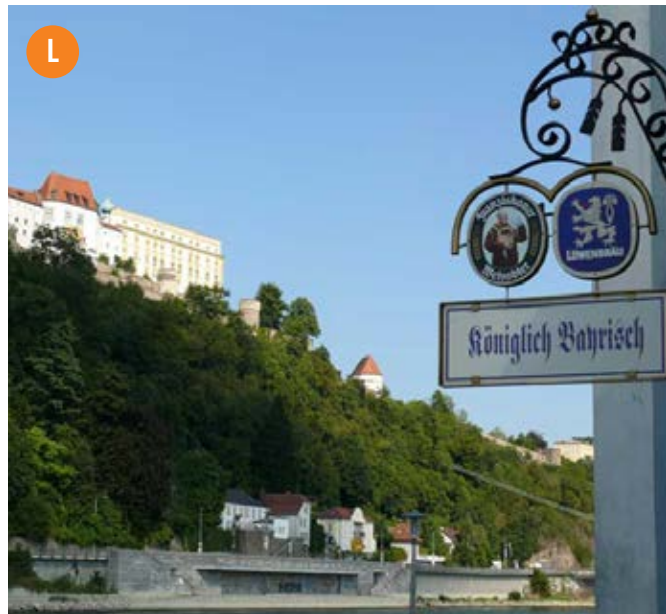
Strawanzer is a modern style Bar in the middle of Passau. We serve draught beer Augustiner, Longdrinks, Cocktails, and small delicious bavarian dishes.



STRAWANZER

TRADITIONSWIRTSCHAUS KÖNIGLICH BAYRISCH

Enjoy our terrace with a unique view of the Veste Oberhaus and the passing of the ships on the Danube. Finish your city tour with us. We look forward to seeing you at Königlich Bayrisch.



» FOOD AND DRINK

VOGL AUF DER RIES

Would you like to eat delicious and traditional food? Celebrating a party you never forget? Enjoying a summer night with friends? Then you are exactly right in your choice to visit us. It would be a pleasure for us to welcome you as a guest in our house. Are you planning your next event? Don't hesitate to contact us for an individuel offer for this special moment.



"WEINGUT" RESTAURANT.WEINBAR.VINOTHEK

Visit Passau and taste wonderful types of wine from alongside the Danube and all around the world. Enjoy wine culture in the very heart of the three river city of Passau. We would be delighted to offer you culinary experiences that include not only wine but also regional and international delicacies. Restaurant / Bar: Tue – Sat from 5:30 p.m.

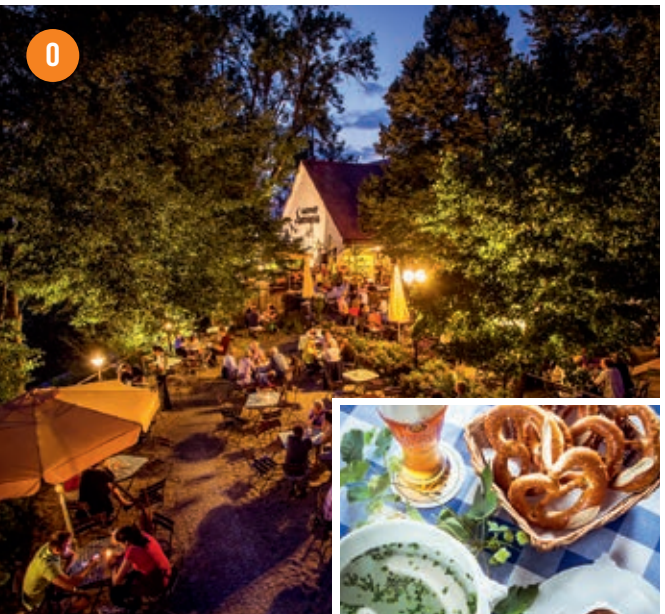
- wine tasting with or without additional culinary accompaniment (for groups of 6 people or more)
- nice summer terrace
- wine shop



WIRTSCHAUS ANDORFER

Weissbräu Andorfer is the smallest private brewery on the sunny side of Passau. Whether in our inviting parlor, our wheat beer cellar or our spacious, sunny beer garden, you can look forward to home-brewed beers which are excellent in combination with our Bavarian specialties.

- home-brewed beer
- Bavarian specialties
- large parking area for free



ACCOMMODATION.



Plan page 32/33

Name / Address	No.	Phone	Rooms	Beds	Rooms quipped with					Hotel facilities							
		+49 (0)851 /											P		P _{bus}		
HOTEL INNSENTO PASSAU **** Kapuzinerstraße 32, 94032 Passau www.innsento.de info@innsento.de	1	7566660	147	300	X	X	X	X	X	–	X	X	X	X	X	X	GB, I, CZ
MK I HOTEL PASSAU *** Bahnhofstraße 24, 94032 Passau www.mkhoteles.de/home/passau/de passau@mkhotels.de	2	7568660	128	256	–	–	X	X	X	X	X	X	–	X	–	X	GB
PREMIER INN PASSAU WEISSER HASE Heiliggeistgasse 1, 94032 Passau www.premierinn.de passau.weisserhase@premierinn.com	3	98693898	108	207	–	–	X	X	X	X	X	X	–	X	–	–	GB
HOTEL ROTEL INN Haissengasse 10, 94032 Passau www.rotel-inn.de info@rotel-inn.de	4	95160	90	180	–	–	–	X	–	–	X	X	X	–	–	–	GB
B&B HOTEL PASSAU WEST Danziger Straße 20, 94036 Passau www.hotelbb.com/de/hotel/passau passau@hotelbb.com	5	988440	84	144	–	–	X	X	X	X	X	X	X	X	on request	X	GB
HOTEL DREIFLÜSSEHOF HAUPTHAUS **** Danziger Straße 42–44, 94036 Passau www.dreifluessehof.de info@dreifluessehof.de	6	72040	65	122	X	–	X	X	X	–	X	X	X	X	X	X	GB
HOTEL RESIDENZ **** Fritz-Schäffer-Promenade 6, 94032 Passau www.residenz-passau.de hotel@residenz-passau.de	7	989020	50	100	X	X	X	X	X	–	X	X	X	–	–	X	GB, F, I, H
ALTSTADT-HOTEL PASSAU **** Bräugasse 23–29, 94032 Passau www.altstadt-hotel.de info@altstadt-hotel.de	8	3370	34	78	X	X	X	X	–	–	X	X	–	X	–	–	GB, E
HOTEL WILDER MANN Schrottgasse 2 – 4, 94032 Passau www.wilder-mann.com info@wilder-mann.com	9	35071	46	78	X	–	X	X	–	–	X	X	X	–	–	–	GB
HOTEL KÖNIG **** Untere Donaulände 1, 94032 Passau www.hotel-koenig.de info@hotel-koenig.de	10	3850	41	77	X	X	X	X	X	–	X	X	X	X	–	X	GB

>> ACCOMMODATION

Plan page 32/33

Name / Address	No.	Phone	Rooms	Beds	Rooms quipped with					Hotel facilities							
		+49 (0)851 /											P		P _{bus}		
GARNI ATRIUM Neue Rieser Straße 6, 94034 Passau www.atrium-passau.de info@atrium-passau.de	11	9886688	49	76	–	X	X	X	–	–	X	X	–	X	–	X	GB
GARNI SPITZBERG Neuburger Straße 29, 94032 Passau www.hotel-spitzberg.de info@hotel-spitzberg.de	12	955480	35	68	–	X	X	X	–	–	–	X	–	X	–	X	GB
GARNI PASSAUER WOLF Untere Donaulände 4, 94032 Passau www.hotel-passauer-wolf.de info@hotel-passauer-wolf.de	13	931510	39	60	–	X	X	X	–	–	X	X	–	–	–	X	GB
HOTEL BLAUER BOCK Höllgasse 20, 94032 Passau www.hotel-blauerbock.de info@hotel-blauerbock.de	14	7566650	26	52	X	–	X	X	–	–	X	–	–	X	–	–	GB
HENDL HOUSE & STADTHOTEL Große Klingergasse 17, 94032 Passau www.hendlhouse.com passau@hendlhouse.com	15	33069	15	39	–	–	X	X	–	–	–	X	–	–	–	X	GB, H
AM PAULUSBÖGEN **** Rindermarkt 2, 94032 Passau www.ampaulusbogen.de info@ampaulusbogen.de	16	931060	17	36	X	X	X	X	–	–	X	X	–	–	–	X	GB
RIVERS HOTEL & LIVING Kapuzinerstraße 4, 94032 Passau www.rivers-passau.de info@rivers-passau.de	17	989000100	25	70	–	–	X	X	X	–	X	X	X	X	–	X	GB, F, CZ, HR
PENSION GAMBRINUS Bayerisch Haibach 20, 94032 Passau www.pension-gambrinus.de info@pension-gambrinus.de	18	2905	20	50	–	–	X	X	–	–	–	X	X	–	–	–	GB, H, I

- Room with telephone
- Minibar
- Television
- WIFI
- air conditioning
- Facilities for handicapped people
- Lift / elevator
- Credit cards accepted
- P Parking
- Parking garage/ underground car park
- Bus parking
- Pets on request
- Language

Adventurous Danube

Experience and enjoy together: Diverse, colorful, dynamic - like the Danube itself - is also the group travel offer of Danube Upper Austria.

The region from Schärding at the Bavarian-Upper Austrian border to St. Nikola at the border to Lower Austria is a true Adventureland and tailor-made for group moments for eternity. Amazingly moving nature, splendid culture, appealing locations and social enjoyment at the highest level are the ingredients for a successful trip.



YOUR CONTACT FOR GROUPS
Bettina Berndorfer, Regional manager
Tourismusverband Donau Oberösterreich
E-Mail: gruppen@donauregion.at
www.donauregion.at/gruppen



MAPS.

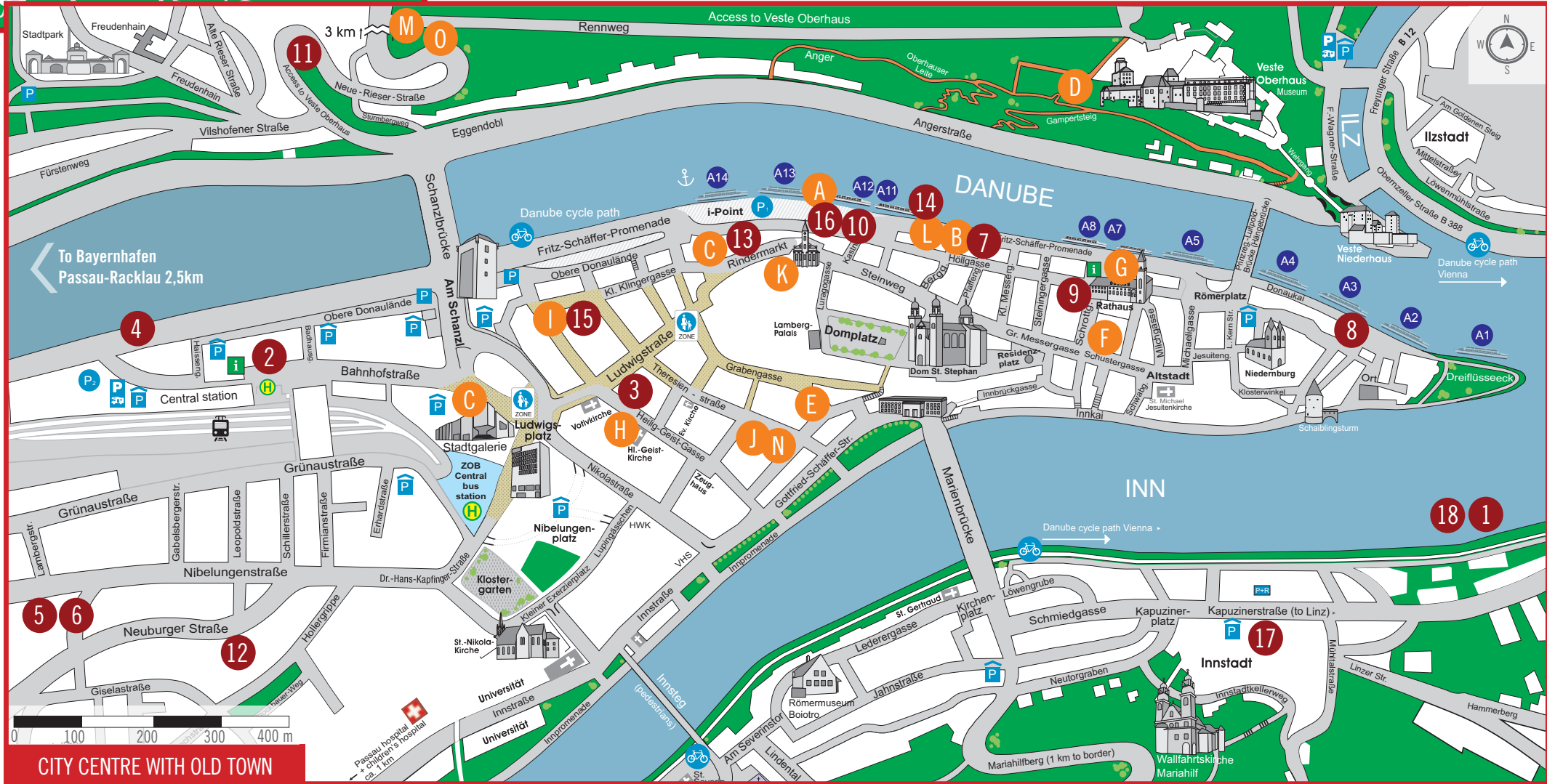


» CITY OF SHORT DISTANCES

To ensure the ultimate trip planning for you, these pages show several maps. They show the location of hotels and gastronomy which is presented in this brochure. You also get an impression of Passau's transport connections.

For the perfect local orientation of your guests, we will be happy to provide you with handy city maps. Please order if required!

- Accommodations
- Restaurants, bars and cafés



SERVICE.



UNIQUE SHOPPING EXPERIENCE.

- More than 500 shops make Passau the perfect shopping destination.
- All shops within walking distance: Relaxed shopping day in Passau.
- Wide selection & substantial offering: Something for every taste.
- A great mix of traditional and modern shops.
- Numerous parking facilities.

FURTHER INFORMATION

- <https://tourism.passau.de/leisure-sports/shopping>

KEY INFORMATION (no claim for completeness)

EMERGENCY TELEPHONE NUMBERS

Police, Ph. 110
Fire Service / rescue service, Ph. 112
Emergency medical service, Ph. 116117

MEDICAL CENTERS

Klinikum Passau (hospital)
Innstr. 76, Ph. +49 (0)851/5300-0
Kinderklinik Dritter Orden Passau (children's hospital)
Bischof-Altmann-Str. 9,
Ph. +49 (0)851/72050

OTHER IMPORTANT CONTACTS

Passau Police Department
Karlsbaderstr. 11, Ph. +49 (0)851/9511-0
Postal Service
Bahnhofstr. 24

TRAFFIC SERVICES

ADAC-Pannenhilfe
24/7 Ph. +49 (0)89/2020400
Deutsche Bahn AG, (rail service)
Ph. +49 (0)30/2970
Passau Taxi Hotline
24/7 Ph. +49 (0)851/57373

MUNICIPAL INSTITUTIONS

Lost property office
Rathausplatz 2, Ph. +49 (0)851/396-144

TOURIST-INFORMATION

Rathausplatz 2 & Bahnhofstraße 28
Ph.+49 (0)851/396-610

LONG-TERM PARKING (SELECTION)

Parkhaus Bahnhofstraße,
Ph. +49 (0)851/560-462
Parkhaus Schanzl, +49 (0)851/560-462
Tiefgarage Römerplatz, +49 (0)851/560-462
→ **Further information:**
tourism.passau.de/service-info/parking/

RIVER SERVICES

Water Authority Deggendorf
Passau Office, Dr.-Geiger-Weg 6
Ph. +49 (0)851/5906-0
Stadtwerke Passau (SWP)
Regensburger Str. 29, Ph. +49 (0)851/560-0
Staustufe Kachlet (barrage lock)
Schleusenweg 6, Ph. +49 (0)851/95519-211
Staustufe Jochenstein (barrage lock)
Am Kraftwerk 1, Ph. +49 (0)8591/91198-111
Flood Information Service
(flood information service) www.hnd.bayern.de

BUS-CHARTER.

- **DONAU-SCHIFFS-REISE-CENTER, HELMUT ECKERL E.K.**
Kastnergasse 1, 94032 Passau, Ph. +49 (0)851 / 34262, www.donau-schiffs-reise-center.de
- **EICHBERGER REISEN GMBH & CO. KG**
Messestraße 6, 94036 Passau, Ph. +49 (0)851 / 989000200, www.eichberger-reisen.de
- **FÜRST REISEN GMBH & CO. KG**
Marktstr. 17, 94116 Hutthurm, Ph. +49 (0)8505 / 90090, www.fuerstreisen.de
- **NIEDERMAYER VERKEHRSUNTERNEHMEN UND REISEBÜRO GMBH & CO. KG**
Bahnhofstraße 30, 94032 Passau, Ph. +49 (0)851 / 8869612, www.niedermayer-busse.de

MEDICAL SUPPLY STORES

Sanitätshaus Fürst GmbH
Kleine Klingergasse 10, Ph. +49 (0)851/931430
Zimeda GmbH & Co. KG
Dr.-Emil-Brichta-Str. 3, Ph. +49 (0)851/959730
reha team Mais
Josef-Großwald-Weg 1, Ph. +49 (0)851/988280
Zimmermann Sanitätshaus
Nibelungenplatz 4, Ph. +49 (0)851/85193330

NATIONAL HOLIDAYS 2024

January 01: New Year's Day
Januar 06: Epiphany
March 29: Good Friday
March 31: Easter Sunday
April 01: Easter Monday
May 01: Labor Day
May 09: Ascension Day
May 19: Pentecost Sunday
May 20: Pentecost Monday
May 30: Corpus Christi
August 15: Assumption Day
October 03: German Reunification Day
November 01: All Saints' Day
December 25: Christmas Day
December 26: Boxing Day

GROUP CONSULTATION.

Please do not hesitate to get in touch with our team about accommodation, gastronomy, attractions, tour providers, events, shopping and much more besides.

Simply order our wide-ranging information brochures or make an appointment.

→ WE WILL BE PLEASED TO ARRANGE AN INDIVIDUAL PROGRAM FOR YOUR GROUP TRIP.

CONTACT

Stadt Passau - Passau Tourismus & Stadtmarketing
Bahnhofstraße 28, 94032 Passau
Ph. +49 (0)851/396-614, -615
gruppen@passau.de

LEGAL NOTE

Attention! All data printed are based on the information given by the providers. No responsibility can be taken for incorrect or incomplete information. Contract of guest accommodation will be concluded directly between hotel and guest.

Achtung! Das Verzeichnis wurde nach den Angaben der einzelnen Anbieter erstellt. Eine Haftung seitens der Stadt Passau für diese Daten oder auch Druckfehler kann nicht übernommen werden. Der Gastaufnahmevertrag wird direkt zwischen Beherbergungsbetrieb und Gast geschlossen.

Attention! Toutes les informations reproduites sont celles que nous avons reçues des hôtels. Aucune responsabilité n'est assurée concernant l'exactitude et l'intégralité de cette information. La conclusion du contrat d'hébergement s'effectue entre l'hôtel et le client.

Attenzione! La lista degli alberghi è stata realizzata su dati forniti dalle aziende. L'ufficio turistico perciò non risponde de eventuali errori di stampa o cambiamenti. Il contratto di soggiorno viene stipulato direttamente fra ospite e albergo.

TOURIST-INFORMATION.

RATHAUSPLATZ 2 (town hall tower)

Easter - September

Mon. - Fri. 08:30 a.m. - 05:00 p.m.
Sat., Sun.,
holidays 10:00 a.m. - 04:00 p.m.

Oktober - Easter

Mon. - Thu. 08:30 a.m. - 05:00 p.m.
Fri. 08:30 a.m. - 04:00 p.m.
Sat., Sun. 10:00 a.m. - 03:00 p.m.

BAHNHOFSTRASSE 28 (opp. Railway Station)

Easter - September

Mon. - Fri. 09:00 a.m. - 12:15 p.m.,
12:45 p.m. - 05:00 p.m.
Sat., Sun.,
holidays 10:00 a.m. - 03:00 p.m.

Oktober - Easter

Mon. - Thu. 09:00 a.m. - 12:15 p.m.,
12:45 p.m. - 05:00 p.m.
Fri. 09:00 a.m. - 12:15 p.m.,
12:45 p.m. - 04:00 p.m.
Closed on Sat., Sun. and holidays

IMPRINT

Publisher: Stadt Passau
Content and layout: Passau Tourismus & Stadtmarketing
Bahnhofstraße 28, 94032 Passau
(subject to change, no claim to be exhaustive)

Picture credits: Stadt Passau; Cover: ThinkstockPhotos_RPIImages; p. 3, 4, 8, 9, 34 Hajo Dietz; p. 3 Aarón Blanco Tejedor — unsplash; p. 3 Florian Weichselbaumer; p. 5 Manfred Rauscher; p. 6 Wurm & Noé; p. 9, 21 Marcel Peda; p. 9 Toni Scholz; p. 10 Susanne Wax; p. 10 Walter Nussbaumer p. 11 Kur- & GästeService Bad Füssing; Tourismus Salzburg; Ing. Libor Sváček; p. 17, 18, 19, 20 Passau-Tours GmbH & Co. KG; p. 21, 26 Journey Gastro GmbH; p. 25 Stefan J. Wolf; as well as kindly provided by the respective providers.

Print: MINDL Print+Lettershop GmbH

Correct as of: All dates and prices subject to change and correct as of Feb. 2024

TOURIST-INFORMATION

Rathausplatz 2 and
Bahnhofstraße 28
94032 Passau

Phone +49 (0)851/396-610

tourist-info@passau.de

TOURISM.PASSAU.DE

パッサウへようこそ

Bienvenue à Passau

WILLKOMMEN IN PASSAU

BENVENUTI A PASSAU

Dobro došli v Passau

Welkom in Passau

Bienvenidos a Passau

Welcome to Passau

ÜDVÖZÖLJÜK PASSAUBAN

Välkommen till Passau

Добро пожаловать в Пассау

Vítáme Vás v Pasově

欢迎光临帕绍