



## PARKING IN PASSAU

	PARKING	Height	Opening hours	Amount	Charger
P1	Parking garage Bahnhofstraße	2.05 m	24 hours	740	
P2	Parking garage Donaupassage	2.10 m	24 hours	559	
P3	Parking garage Wöhrl	2.05 m	Mon. – Sat.: 07:00 a.m. – 09:00 p.m.	124	
P4	Parking garage City Parkhaus	1.90 m	Mon. – Fri.: 07:30 a.m. – 08:30 p.m. Sat.: 08:30 a.m. – 08:30 p.m.	186	
P5	Parking garage Schanzl	2.05 m	24 hours	331	
P11	Parking lots Schanzlbrücke	2.10 - 4 m	24 hours	440	
P6	Parking garage Stadtgalerie	2.10 m	Mon. – Sat.: 08:30 a.m. – 07:30 p.m.	500	
P7	Parking garage Zentralgarage	2 m	24 hours	920	
P8	Parking garage Römerplatz	1.95 m	24 hours	188	
P9	Parking garage Quartier Mitte	2.05 m	Mon. – Sat.: 6:00 a.m. – 10:00 p.m.	44	
P22	Parking lots Central station		24 hours	35	
P23	Parking lots Central station west		24 hours	53	
P+R	P+R car park Kapuzinerstraße	2.05 m	24 hours	40	
P10	Parking garage Innstadt	2 m	24 hours	124	
P11	Parking garage INN.VIERTEL	2.10 m	24 hours	35	
P4	Parking lots Veste Oberhaus		24 hours	90	
P10	Parking deck Ilzbrücke	2 m	24 hours	131	
P+R	P+R car park Kohlbruck		24 hours	30	
P13	Parking garage Messepark Kohlbruck	2.05 m	24 hours	691	
COACH PARKING					
P1	Fritz-Schäffer-Promenade*	No charge for 15 min., otherwise chargeable			
P2	Bahnhofstraße	Chargeable short-term parking, disposal station, no supply			
P13	Veste Oberhaus	No charge for short-term parking - no long-term parking			
MOTORHOME SITE					
P	Winterhafen Racklau	Free parking, no amenities		30 - 35	
P	Coach parking Bahnhofstraße	Chargeable parking, disposal station, no supply		15	
P	Parking deck Ilzbrücke	Chargeable parking, incl. amenities		13	

### Long term parking:

[tourism.passau.de/service-info/parking](https://tourism.passau.de/service-info/parking)

**Parkster App:** Use the app to buy your ticket for several parking lots. Pay monthly by transfer or credit card.

\* payment only with Parkster App

## TOURIST INFORMATION PASSAU

RATHAUSPLATZ 2 & BAHNHOFSTRASSE 28



For current opening hours, scan the QR-code or visit our website:  
[tourism.passau.de/service-info/tourist-information/](https://tourism.passau.de/service-info/tourist-information/)



### CONTACT

Ph. +49 (0)851 / 396-610 · [tourist-info@passau.de](mailto:tourist-info@passau.de) · [tourism.passau.de](https://tourism.passau.de)



**Facebook:**  
[www.facebook.com/visit.passau](https://www.facebook.com/visit.passau)

**Instagram:**  
[www.instagram.com/visit.passau](https://www.instagram.com/visit.passau)



### IMPRINT

**Publisher:** Stadt Passau

**Content and layout:**

Passau Tourismus & Stadtmarketing, Bahnhofstraße 28, 94032 Passau  
(subject to change, no claim to be exhaustive; State 11 / 2025 – ENGLISH)

**Picture credits:** Stadt Passau as well as placed at disposal by the respective institutions; Title/p. 2/p. 20 Manfred Rauscher; p. 6/p. 20 pedagrafie; p. 4/p. 5 Hajo Dietz; p. 7 Toni Scholz; p. 10 Enrico Herzig; p. 12 Martin Weber; p. 21 Thomas Linkel

**Print:** PASSAVIA Druckservice GmbH & Co. KG



**PASSAU**  
Leben an drei Flüssen



**PASSAU**  
THE CITY ON THREE RIVERS

where culture meets joie de vivre



## EXPERIENCE PASSAU

Sights, Museums, Galleries, Stages,  
Guided Tours, Boat Cruises & Bus Trips

City Map included



[TOURISM.PASSAU.DE](https://tourism.passau.de)

# EXPERIENCE CULTURE IN PASSAU



View from Fortress  
Veste Oberhaus



Oberhausmuseum

## EXPERIENCE ...

... the beautiful CITY\_ON\_THREE\_RIVERS Passau by foot, bus or boat. Join a guided tour in your favourite kind of way. The information and offers on the following pages will help to make your visit in Passau unforgettable.

### TIP:






Take full advantage of your stay with the PassauRegioCard.

[www.passauregiocard.de](http://www.passauregiocard.de)

### CONTENT:

Sights.....	4-5
Museums&Galleries.....	6-11
Stages.....	12-13
Guided Tours.....	14-26
Round Trips .....	27-29
City Map.....	30

### SYMBOLS:

	Time, duration, opening hours (german date format)		Meeting point
	Price per person (VAT included)		Languages
	Minimum number of participants		



## CONJUNCTION POINT OF DANUBE, INN AND ILZ

1

Three rivers from three directions meet at the “Dreiflüsseck”: Danube, Inn and Ilz offer an impressive natural spectacle. Looking downstream, you can see the black Ilz streaming into the blue-brown Danube from the left and the green Inn joining from the right.



## OLD TOWN HALL

2

Built in Venetian style, the Old Town Hall is one of the most prominent buildings of Passau's Old Town. The paintings on the outside show Emperor Ludwig of Bavaria and four flag bearers (Electorates of Saxony, Trier, Cologne and Duchy of Bavaria). The tower is 38 meters high and houses the tourist information in the groundfloor.



CARILLON - TOWN HALL TOWER daily 11:30 a.m., 2:30 p.m.



Stadt Passau / Rathausplatz 2 / 94032 Passau

Ph. +49 (0)851/396-610 / tourist-info@passau.de / tourism.passau.de

## ST. STEPHEN'S CATHEDRAL (ORGAN CONCERTS)

3

The magnificent building with its white towers and blue-green domes is the crucial baroque church north of the Alps. The architects Carlo Lurago and Giovanni Battista Carlone gave the church their own Italian character after a fire in 1662. The ornately interior holds an exceptional treasure: the biggest cathedral organ in the world with 17,974 pipes and 233 registers.



Apr.-Oct. daily 6:30 a.m. - 7 p.m.; Nov.-Mar. daily 6:30 a.m. - 6 p.m.; working days closed from 10:45 - 11:20 a.m. and during organ concerts  
**Organ concerts:** May - October working days 12 a.m.; once a month Thur. 7:30 p.m.; times: [www.dommusik-passau.de](http://www.dommusik-passau.de)  
**Dur. Advent:** Wed. - Sat. 12 a.m.



**Organ concerts at noon:**  
 adults 5.00 €; reduced 2.00 €  
**Organ concerts in the evening**  
 adults 10.00 €; reduced 5.00 €

Diözese Passau - KdöR / Domplatz 7 / 94032 Passau

Ph. +49 (0)851/393-8153 / dommusik@bistum-passau.de / [www.bistum-passau.de](http://www.bistum-passau.de)

## PILGRIMAGE CHURCH “MARIAHILF”

4

The baroque pilgrimage church Mariahilf with its prominent towers and the adjacent St. Paul monastery rises high above the district Innstadt. The baroque monastery from the 17th century was of great significance as a place of pilgrimage to Saint Mary. A covered stairway with 321 steps leads up to the pilgrimage chapel. The walkway is adorned with numerous votive tablets.



daily 7 a.m. - 8 p.m.



free entry

Wallfahrtskirche Mariahilf Passau / Mariahilfberg 3 / 94032 Passau

Ph. +49 (0)851/2356 / wallfahrt@mariahilf-passau.de / [www.mariahilf-passau.de](http://www.mariahilf-passau.de)

## FORTRESS “VESTE OBERHAUS” AND MUSEUM

5

High above Passau the Veste Oberhaus, the former residence of the prince-bishops and one of the largest surviving castle complexes in Europe, invites visitors on a journey through the centuries. Within the historic castle walls, the Oberhausmuseum presents exciting exhibitions about the medieval life and the history of Passau. The Observation Tower offers unrivalled panoramic views.



### Museum:

Mar. 15 - Nov. 15  
Mon. - Fri. 9 a.m. - 5 p.m.  
Sat., Sun., holidays, 10 a.m. - 6 p.m.  
Dec. 25, 2026 - Jan. 6, 2027  
daily 10 a.m. - 4 p.m. (closed on Dec. 31)  
**Observation Tower:**  
Mar. 15 - Nov. 15  
Mon. - Fri. 9:30 a.m. - 4:30 p.m.  
Sat., Sun., holidays 10:30 a.m. - 5:30 p.m.



adults 7.00 €; reduced 5.00 €

**Veste Oberhaus | Oberhausmuseum (Stadt Passau)** / Oberhaus 125 / 94034 Passau  
Ph. +49 (0)851/396-800 / [oberhausmuseum@passau.de](mailto:oberhausmuseum@passau.de) / [www.oberhausmuseum.de](http://www.oberhausmuseum.de)

## ROMAN MUSEUM “KASTELL BOIOTRO”

6

The Roman Museum is located in the Innstadt district, in a medieval building situated directly on the late antique foundations of the Boiotro fort, which has been part of the UNESCO World Heritage Danube Limes since 2021. With numerous exhibits, models and multimedia installations, the museum offers fascinating insights into the lives of people in Passau, right on the border of the Roman Empire.



Mar. 1 - Nov. 15  
Tue. - Sun. 10 a.m. - 4 p.m.



adults 5.00 €; reduced 3.00 €

**Römermuseum Kastell Boiotro (Stadt Passau)** / Lederergasse 43-45 / 94032 Passau  
Ph. +49 (0)851/34769 / [roermuseum@passau.de](mailto:roermuseum@passau.de) / [www.roermuseum.passau.de](http://www.roermuseum.passau.de)

## MUSEUM OF MODERN ART WÖRLÉN

7

In 1990 the Museum of Modern Art Wörlén was founded by the architect Hanns Egon Wörlén (1915-2014) in the Old Town of Passau. The museum's extensive fine arts collection, which is based on the inheritance of the painter Georg Philipp Wörlén (1886-1954), contains artworks from Expressionism to Contemporary Art. Since its founding, the museum has shown more than 300 exhibitions.



Tue. - Sun. 10 a.m. - 6 p.m.  
closed on Good Friday, Christmas Eve  
and New Years Eve



adults 10.00 €; reduced 7.00 €;  
family card 15,00 €; children up to 6 y. free

**Museum Moderner Kunst Wörlén gem. GmbH** / Bräugasse 17 / 94032 Passau  
Ph. +49 (0)851/3838790 / [info@mmk-passau.de](mailto:info@mmk-passau.de) / [www.mmk-passau.de](http://www.mmk-passau.de)

## PASSAU GLASS MUSEUM

8

The Glass Museum Passau, designated by Friedrich Dürrenmatt as “the most beautiful glasshouse in the world”, is the biggest museum on European glass worldwide and is listed in the “Cultural properties of National Significance”. 15,000 pieces on display show the great art and variety of glassmaking in Bavaria, Bohemia, Austria and Silesia from 1650 to 1950.



mid of Feb. - Dec. 20  
daily 9 a.m. - 6 p.m.



adults 9.00 €; reduced 7.00 €;  
children up to 6 years free

**Glasmuseum Passau; Rotel Tours - Das Rollende Hotel Georg Höltl GmbH & Co. KG**  
Schrottgasse 2 (Ecke Rathausplatz) / 94032 Passau / Ph. +49 (0)851/35071  
[info@glasmuseum.de](mailto:info@glasmuseum.de) / [www.glasmuseum.de](http://www.glasmuseum.de)

## MUSEUM AT THE CATHEDRAL

9

The Museum at the Cathedral displays masterpieces of art ranging from the Romanesque period up to the present. The so-called major court hall was the site of the festivities celebrating the wedding of Emperor Leopold I of Austria to Eleonora, daughter of the Palatine Count and Duke of Palatine-Neuburg in 1676. Today the room is used for special exhibitions, focusing on contemporary art.



	May 2 - Oct. 31 Mon. - Sat. 10 a.m. - 4 p.m. closed on Sun. and holidays
	adults 2.00 €; children and groups from 20 pers. 1.00 € p. p.; families 2.50 €



**Diözese Passau - KdöR** / Residenzplatz 8 / 94032 Passau  
Ph. +49 (0)851/3933331 / [kunstreferat@bistum-passau.de](mailto:kunstreferat@bistum-passau.de) / [www.bistum-passau.de](http://www.bistum-passau.de)

## FRESCO MUSEUM NIEDERBURG

10

The Fresco Museum Niedernburg is a reminder of St. Mary's Church (Marienkirche – 12th century), which was destroyed by the great fires of the 17th century. The Romanesque vestibule has been preserved and with its secco paintings it is an impressive testimonial of Christian faith in the High Middle Ages. The more than 800-year-old wall paintings belong to the most valuable cultural assets of Romanesque art in southern Germany.



	daily 10 a.m. - 6 p.m. no technical devices in winter
	free entry



**Fresco-Museum** / Bräugasse 14 / 94032 Passau  
Ph. +49 (0)851/3933331 / [kunstreferat@bistum-passau.de](mailto:kunstreferat@bistum-passau.de) / [www.bistum-passau.de](http://www.bistum-passau.de)

## MEDIEVAL TORTURE MUSEUM AT ANGER

18

A unique collection and exhibition about the time of the Inquisition and the persecution of witches in the Middle Ages is on display in historic vaulted rooms. The ecclesiastical courts mercilessly persecuted dissidents at this time. The exhibition traces this period and shows numerous original exhibits.



	Mar. 15 - Dec. 15 Thu. - Sun. 1 p.m. - 5 p.m. different opening hours for groups on request
	adults 7.00 €; reduced 5.00 €; further discounts see website



**Collection Münch, organiser: Kunst-Treff-an-der-Donau Walter Nussbaumer**  
Parkstraße 2-4 / 94034 Passau / Ph. +49 (0)851/21338392  
[info@foltermuseum-passau.de](mailto:info@foltermuseum-passau.de) / [www.foltermuseum-passau.de](http://www.foltermuseum-passau.de)

## EXHIBITION HALL “KULTURMODELL BRÄUGASSE”

11

The historic former brewery on Bräugasse 9 has been comprising a total of 1,100 m<sup>2</sup> exhibition and event rooms, a completely equipped lithographic and etching printing workshop, studios for visual artists, a rehearsal room for dance and theatre as well as accommodation for artists from all over the world since 1991.



	during exhibitions Wed. - Sun. 2 p.m. - 5 p.m.
	free entry

**Kulturmodell Bräugasse** / Bräugasse 9 / 94032 Passau  
Ph. +49 (0)851/37934034 / [kulturmodell@passau.de](mailto:kulturmodell@passau.de) / [www.kulturmodell.de](http://www.kulturmodell.de)

## “ART ALLEY” HÖLLGASSE / AGON E. V.

12

At the end of the 20th century various studios and decorative arts workshops moved into rooms on the ground floor in historic Höllgasse. Inspired by this, AGON e.V. was founded in 2000 together with other artists of Passau. The translation of the Ancient Greek word AGON means competition. It emphasizes that the artists meet the challenge of a creative contest.



changing exhibitions and  
opening hours



free entry

**AGON e.V.** / Höllgasse 12 / 94032 Passau

Ph. +49 (0)160/4664697 / [enricoherzig9@gmail.com](mailto:enricoherzig9@gmail.com) / [www.agon-passau.de](http://www.agon-passau.de)

## ART ASSOCIATION “KUNSTVEREIN PASSAU E.V.” – SANKT ANNA-KAPELLE

13

The art society Kunstverein Passau e.V. is located in the Sankt Anna-Kapelle in a former Franciscan monastery. Within those facilities the society hosts annually about ten exhibitions focusing on contemporary regional artists from Bavaria, Austria and Czech Republic. The formidable exhibition contains the chapel with its magnificent gothic arched ceiling, the former cloister and also the courtyard, particularly for big sculptures.



Tue. - Sun. 2 p.m. - 5:30 p.m.



free entry

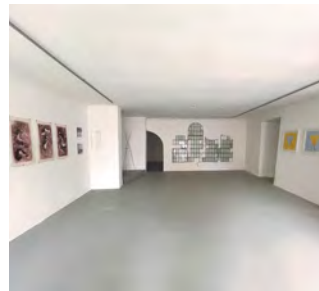
**Kunstverein Passau e.V.** / Heiliggeistgasse 4 / 94032 Passau

Ph. +49 (0)851/9664666 / [contact@kunstverein-passau.de](mailto:contact@kunstverein-passau.de) / [www.kunstverein-passau.de](http://www.kunstverein-passau.de)

## ARTISTS' GROUP “PRODUZENTENGALERIE PASSAU”

14

It's been more than 30 years since the Producers' Group of Artists united and became one of the most important institutions within Passau's art world. The artists' union maintains lively international exchange with other artists and institutions. The exhibitions can also be seen through the window at the corner of Bräugasse / Jesuitengasse and online.



during exhibitions  
Thu. - Sun. 3 p.m. - 5 p.m.



free entry

**Produzentengalerie Passau** / Jesuitengasse 9 / 94032 Passau / Ph. +49 (0)8502/8250

[info@produzentengalerie-passau.de](mailto:info@produzentengalerie-passau.de) / [www.produzentengalerie-passau.de](http://www.produzentengalerie-passau.de)

## GALLERY ART ACTIVE FOR CONTEMPORARY ART

20

The ART ACTIVE gallery shows contemporary art by national and international artists. Exhibitions, readings, various art events and art workshops are offered on an ongoing basis. The gallery is represented by the art producers of the ART ACTIVE artist group 23, who run the cultural program of the ART ACTIVE gallery in collaboration with the ART ACTIVE Kunst und Kultur e.V.



Thu. - Sat. 3 p.m. - 6 p.m.



free entry

**Gallery ART ACTIVE for Contemporary Art** / Schmiedgasse 11 / 94032 Passau

Ph. +49 (0)151/71003267 / [info@artactivegalerie.de](mailto:info@artactivegalerie.de) / [www.artactivegalerie.de](http://www.artactivegalerie.de)



## THEATRE OF PASSAU'S PRINCE-BISHOP

15

The Theatre of Passau's Prince Bishop offers top-class productions in a beautifully charming baroque theater ambiance. Whether dramas or operas, chamber music or symphonic works, from antiquity to avant-garde – all its guests can experience everything the theatric world has to offer. The theatre is one of the most important stages in the region today.



Box office Tue. + Wed. 10 a.m. - 2 p.m.  
and Thu. + Fri. 2 p.m. - 6 p.m.  
and 1 hour prior to performances



depending on the event

**Theater im Fürstbischöflichen Opernhaus Passau** / Gottfried-Schäffer-Str. 2 / 94032 Passau  
Ph. +49 (0)851 / 9291913 / theater@passau.de / www.landestheater-niederbayern.de

## SCHARFRICHTERHAUS

16

The Scharfrichterhaus is a nationally known cabaret theater in Passau. A top-class program of cabaret, comedy, literature and music has been offered for almost 50 years.



Office Mon. - Fri. 9 a.m. - 3 p.m.  
events always start at 8 p.m.



depending on the event

**Scharfrichterhaus** / Milchgasse 2 / 94032 Passau  
Ph. +49 (0)851 / 35900 / info@scharfrichterhaus.de / www.scharfrichterhaus.de

## CAFÉ MUSEUM – PASSAU'S JAZZCLUB

17

Recent awards again confirm the "Café Museum" as one of the top 20 Jazz Clubs in Germany and well established in the region. For more than 20 years now, the "Café" is completing the cultural scenery of Passau and is a must for jazz-aficionados. Musicians from entire Europe and the US and many other countries perform on stage under the late-gothic arches of the building.



Tue. + Wed. 6 p.m. - 11 p.m.  
Thu. - Sat. 12 a.m. - 11 p.m.  
Sun., holidays 12 a.m. - 6 p.m.  
on event evenings 6 p.m. - 11 p.m.



depending on the event

**Café Museum - Jazzfest Passau e.V.** / Bräugasse 17 / 94032 Passau  
Ph. +49 (0)851 / 21246410 / music@cafe-museum.de / www.cafe-museum.de

## LIVE-CLUB ZAUBERBERG

19

The Live-Club Zaubenberg offers a diverse and cross-genre pop culture programme all year round. The non-profit institution regularly hosts a wide range of events, parties and live music concerts covering mainstream as well as niche genres. As a summer highlight Zaubenberg annually realises the popular "Umsonst & Draußen" ("for free & outside") festival.



changing opening times; mostly  
Thu. - Sat. and on days before holidays



depending on the event;  
partly free entry

**Live-Club Zaubenberg (Zauberberg gGmbH)** / Franz-Stockbauer-Weg 1 / 94032 Passau  
Ph. +49 (0)851 / 96684422 / info@zauberberg-passau.com / www.zauberberg-passau.com

## PASSAU HIGHLIGHTS

Join us for a little stroll through the historic center of Passau. Within 1 hour we will show you the most important highlights of this quaint town. By entertaining stories, our certified guide will give you an overview of Passau, its history, people and culture.



	Apr. - Oct. daily 11 a.m., 2 p.m.; Nov. - Mar. daily 11 a.m.; duration: 1 hr
	adults 12.00 €; children 6.00 €
	no minimum number; prior notice only required Nov. - Apr., via phone or e-mail
	Mooring A 11
	D

**TOPassau GmbH & Co. KG** / Stefan Heusler / Hermann-Mayrhofer-Str. 15 / 94036 Passau  
Ph. +49 (0)176/20801965 / [info@topassau.de](mailto:info@topassau.de) / [www.topassau.de](http://www.topassau.de)

## PASSAU'S GLORY AND MISERY

An exciting drama-tour takes back to baroque times: Court adviser Sir Hörnigk or court-pharmacist Mrs. Röttler present you the eventful history and the impressive buildings of the so called Bavarian Venice. Discover and understand Passau away from all common stereotypes. An extraordinary experience that will inspire you and makes Passau unforgettable!



	daily 2 p.m., every Sat. also 10 a.m. duration: 1:45 hrs
	adults 18.00 €; children 10.00 €
	minimum 2 persons; prior notice via phone or e-mail
	Town hall tower
	D

**Stadtfuchs-Touren** / M. Koopmann M.A. / Lindental 46c / 94032 Passau / Ph. +49 (0)851/45892  
or +49 (0)151 / 44667551 / [stadtfuchspassau@aol.com](mailto:stadtfuchspassau@aol.com) / [www.stadtfuchs-passau.de](http://www.stadtfuchs-passau.de)

## PASSAU CITY TOUR

Join us on a gorgeous walk through the Old Town of Passau. The baroque city on three rivers has long been a magnet for traders and travellers. With our professional guides, "Bavarian Venice" will astonish you from first moments in its winding streets.



	Apr. - Oct. Mon. - Sat. 10:30 a.m., 2:30 p.m.; Sun. and holidays 2:30 p.m.; Nov. - Mar. daily 2:30 p.m.; dur: 1 hr
	adults 9.00 €; children 4.00 €
	no minimum number; no prior notice
	Cathedral (main entrance)
	D

**Passau Guides Eichberger Schiffservice GmbH** / Messestraße 6 / 94036 Passau  
Ph. +49 (0)851/989000220 / [passau-guides@globus-group.de](mailto:passau-guides@globus-group.de) / [www.passau-guides.com](http://www.passau-guides.com)

## 3 COURSES AT 3 LOCATIONS

If you cannot make up your mind where to have lunch or dinner, we will offer you the best solution: enjoy 3 different courses at 3 different places in the centre of Passau. In between, you will not only discover the hidden alleyways of Passau but also learn about its history and highlights. Gourmet version or "5 courses at 5 locations" on request!



	31.05. 6 p.m. and on request duration: 3 hrs
	74.50 €
	minimum 6 persons; prior notice via phone or e-mail
	Mooring A 11
	D, GB

**TOPassau GmbH & Co. KG** / Stefan Heusler / Hermann-Mayrhofer-Str. 15 / 94036 Passau  
Ph. +49 (0)176/20801965 / [info@topassau.de](mailto:info@topassau.de) / [www.topassau.de](http://www.topassau.de)



## CATHEDRAL GUIDED TOUR

In the heart of the Old Town lies our most known site – St. Stephen's Cathedral. Our professional tour guides invite you to join them for a tour of this unique structure, often known as a baroque cathedral with a gothic soul. The impressive pipe organ is one of the highlights in our three river city.



	Apr. - Oct. every Sat. 12:45 p.m. duration: 45min
	6.00 €
	no minimum number; no prior notice
	Cathedral (main entrance)
	D

Passau Guides Eichberger Schiffservice GmbH / Messestraße 6 / 94036 Passau  
Ph. +49 (0)851/989000220 / passau-guides@globus-group.de / www.passau-guides.com

## GUIDED EVENING STROLL

On this one-hour walk through the baroque heart of the old town, you will learn all kinds of interesting facts about the history of Passau, but also about life in the city today. The tour takes you past St. Stephen's Cathedral and the bishop's palaces, across imposing squares with impressive views.



	May - Oct. every Fri. 6 p.m. duration: 1 hr
	15.00 €
	minimum 4 persons; prior notice via phone
	Rindermarkt 1 (St. Paul's Church)
	D, GB

Passau Tours GmbH & Co. KG / Sechzehnerstr. 6c / 94032 Passau / Ph. +49 (0)163/4092992  
or +49 (0)851/20986068 / info@passau-tours.com / www.passau-tours.com

## THE "LINDL" – PASSAU'S NIGHT WATCHMAN

A romantic event: In lantern light a night watchman leads you through the alleys, tells about his hard work and is looking for a capable assistant. Follow him in the footsteps of catastrophes and uprisings, of tragic Jewish and episcopal fates. But beware - he will involve you in the action!



	09.01. / 23.01. / 06.02. / 20.02. / 06.11. / 27.11. / 11.12. – 6 p.m. 20.03. / 10.04. / 24.04. / 16.10. / 30.10. – 8 p.m. 08.05. / 22.05. / 05.06. / 17.07. / 07.08. / 18.09. – 9:15 p.m.; duration: 1:45 hrs
	adults 19.00 €; children 11.00 €
	minimum 2 persons; prior notice via phone or e-mail
	Town hall tower
	D

Stadtfuchs-Touren / M. Koopmann M.A. / Lindental 46c / 94032 Passau / Ph. +49 (0)851/45892  
or +49 (0)151 / 44667551 / stadtfuchspassau@aol.com / www.stadtfuchs-passau.de

## HISTORICAL MEETINGS & SWEET DELIGHTS

An absolute unique arrangement – 4 historical actors und an artist take you on an exciting drama-tour through Passau's history: A bishop's soldier fends off rebels, a plague doctor revives past catastrophes, an Italian architect solves enormous problems and Anna Maria Mozart is outraged about a failed stay... With all this, you will enjoy a very special Passau delicacy!



	10.01. / 07.02. / 21.02. / 07.03. / 04.04. / 25.04. / 23.05. / 27.06. / 18.07. / 01.08. / 12.09. / 10.10. / 07.11. / 28.11. / 12.12. / 26.12. – 4:15 p.m.; duration: 2 hrs
	adults 24.00 €; children 16.00 €
	minimum 4 persons; prior notice via phone or e-mail at least 2 days in advance
	Town hall tower
	D

Stadtfuchs-Touren / M. Koopmann M.A. / Lindental 46c / 94032 Passau / Ph. +49 (0)851/45892  
or +49 (0)151 / 44667551 / stadtfuchspassau@aol.com / www.stadtfuchs-passau.de

## THE CULINARY TOUR

This is the tour for the food lovers! We combine culinary specialties of Passau with entertaining stories about its history, culture and people. Follow the hidden alleyways to explore the landmarks of Passau and enjoy regional drinks/bites.



	every first Sat. of the month 10 a.m. and on request; duration: 2 hrs
	44.50 €
	minimum 6 persons; prior notice via phone or e-mail
	Mooring A 11
	D, GB

**TOPassau GmbH & Co. KG** / Stefan Heusler / Hermann-Mayrhofer-Str. 15 / 94036 Passau  
Ph. +49 (0)176/20801965 / [info@topassau.de](mailto:info@topassau.de) / [www.topassau.de](http://www.topassau.de)

## PASSAU'S TRAGEDIES

A terribly cheerful drama-tour and absolutely current: Again and again, Passau was hit by the worst catastrophes, and its citizens suffered terrible fears. Follow a plague doctor through churches, monasteries and alleys to the traces and locations of past tragedies. And should it become dangerous - don't worry: He will surely save you ...



	25.01. / 22.02. / 22.03. / 05.04. / 17.05. / 28.06. / 05.07. / 02.08. / 13.09. / 11.10. / 15.11. / 20.12. – 2 p.m. duration: 2 hrs
	adults 18.00 €; children 10.00 €
	minimum 4 persons; prior notice via phone or e-mail
	Staircase to the parish-church St.Paul (Rindermarkt)
	D

**Stadtfuchs-Touren** / M. Koopmann M.A. / Lindental 46c / 94032 Passau / Ph. +49 (0)851/45892  
or +49 (0)151 / 44667551 / [stadtfuchspassau@aol.com](mailto:stadtfuchspassau@aol.com) / [www.stadtfuchs-passau.de](http://www.stadtfuchs-passau.de)

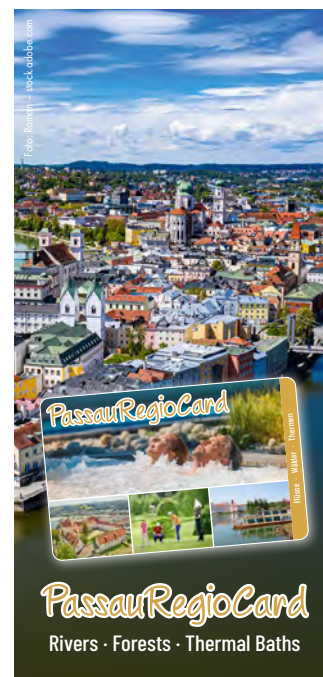
## IT'S CHRISTMAS-TIME IN PASSAU

Enjoy with us a (pre-)Christmas walk through the baroque city of Passau and experience the special magic of this time! During this tour we will not only show you the highlights of our city, but also stations of the Nativity trail. Christmas tales and stories about typical Bavarian Christmas-customs make this city walk a special experience.



	27.11. / 4.12. / 11.12. / 18.12. – 6 p.m. and on request duration: 1:30 hrs
	15.00 €
	minimum 4 persons; prior notice via phone or e-mail
	Rindermarkt 1 (St. Paul's Church)
	D, GB

**Passau Tours GmbH & Co. KG** / Sechzehnerstr. 6c / 94032 Passau / Ph. +49 (0) 163 / 4092992  
or +49 (0)851 / 20986068 / [info@passau-tours.com](mailto:info@passau-tours.com) / [www.passau-tours.com](http://www.passau-tours.com)



### Your Passau Regio Card

**Discover the famous city on three rivers and use your advantages in Passau:**

Get your free access:

- Museum fortress Veste Oberhaus
- Museum of Modern Art
- Museum at the Cathedral
- Organ concerts in the St. Stephens Cathedral
- Roman Museum «Kastell Boiostro»
- «peb», event open air swimming pool
- guided city tour
- transfer bus to the fortress Oberhaus
- public traffic by bus and train

From the 3-day ticket you also receive free:

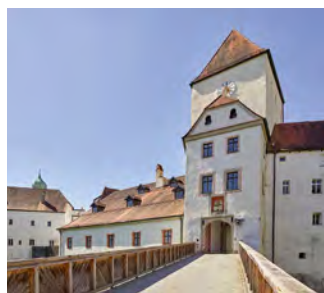
- a three river boat trip

... and still much more in the region

**Information:**  
**tel. +49 (0)8531 – 94 49 49**

## CASTLE TOUR

High above Passau stands one of the largest and best-preserved castle complexes in Europe: the Veste Oberhaus. Within the historic castle walls, history comes to life in a unique way. Embark on a journey through the Middle Ages, Renaissance, and Baroque periods, marvel at the frescoes inside St. George's Chapel and enjoy the stunning panoramic view over the old town and the confluence of the three Passau rivers.



	May - Oct. every first Sun. of the month 3 p.m.; duration: ca. 45 min
	3.50 € plus museum ticket
	no minimum number; prior notice via phone or e-mail
	ticket office
	D

**Veste Oberhaus | Oberhausmuseum (Stadt Passau)** / Oberhaus 125 / 94034 Passau  
Ph. +49 (0)851 / 396-800 / anmeldung-oberhausmuseum@passau.de / www.oberhausmuseum.de

## CASTLE TOUR FOR FAMILIES

Discover with your family one of the largest preserved castle complexes in Europe and learn exciting details about its 800-year history! From the drawbridge to the castle well we explore Veste Oberhaus in a playful way with this tour especially designed for families with children of all ages.



	May - Oct. every first Sun. of the month 2 p.m.; duration: ca. 45 min
	3.50 € plus museum ticket
	no minimum number; prior notice via phone or e-mail
	ticket office
	D

**Veste Oberhaus | Oberhausmuseum (Stadt Passau)** / Oberhaus 125 / 94034 Passau  
Ph. +49 (0)851 / 396-800 / anmeldung-oberhausmuseum@passau.de / www.oberhausmuseum.de

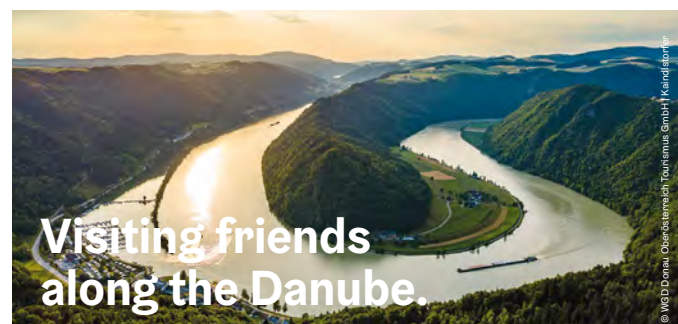
## GUIDED TOUR AT THE ROMAN MUSEUM

Experience Passau as a Roman frontier town! Join an exciting guided tour of the museum and discover Passau's only accessible UNESCO World Heritage site. Explore the city on the edge of the Roman Empire through fascinating archaeological finds, detailed models and figurines that visualise everyday life, culture and the lasting legacy of the Romans – until today.



	1.3., 2 p.m., and on request duration: 1h
	3.00 € plus museum ticket
	no minimum number; prior notice via phone or e-mail
	ticket office
	D, GB

**Römermuseum Kastell Boiotro (Stadt Passau)** / Lederergasse 43-45 / 94032 Passau  
Ph. +49 (0)851 / 34769 / roermuseum@passau.de / www.roermuseum.passau.de



Whether you are cycling along the Danube cycle path or hiking along the Donausteig: Here, the stress of everyday life, rushing and having to do things stay outside. The cultural heritage can be felt on every corner. **New:** On the Danube Limes World Heritage Tour Passau-Schlögen-Passau, you can cycle in the footsteps of the Romans along the UNESCO Danube Limes. As a digital tour guide, Severinus of Noricum provides very personal insights into his time.

**We welcome you to be our guest!**  
Request our cycling and hiking maps now for free:

**Tourismusverband Donau Oberösterreich**  
www.donauregion.at/kataloge





## PASSAU'S CATHEDRAL — MESSAGE & MASTERPIECE

Don't just marvel at the largest baroque cathedral north of the Alps, but learn to read and understand properly! What content does the baroque splendor convey? What problems did builders and artists have to deal with? Art historian Matthias Koopmann reveals the fascinating history of St. Stephen's Cathedral in a captivating and lively way.



	08.01. / 15.01. / 22.01. / 29.01. / 12.02. / 19.02. / 26.02. / 05.03. / 12.03. / 26.03. / 02.04. / 09.04. / 16.04. / 23.04. / 30.04. / 07.05. / 21.05. / 04.06. / 18.06. / 25.06. / 02.07. / 09.07. / 16.07. / 23.07. / 30.07. / 06.08. / 10.09. / 17.09. / 24.09. / 01.10. / 15.10. / 22.10. / 29.10. / 05.11. / 12.11. / 19.11. / 26.11. / 03.12. / 10.12. / 17.12. — 2 p.m.; duration: 1:30 h
	adults 15.00 €; children 8.00 €
	minimum 4 persons; prior notice via phone or e-mail
	Cathedral (main entrance)  D

**Stadtfruchs-Touren** / M. Koopmann M.A. / Lindental 46c / 94032 Passau / Ph. +49 (0)851/45892 or +49 (0)151 / 44667551 / stadtfuchspassau@aol.com / [www.stadtfuchs-passau.de](http://www.stadtfuchs-passau.de)

## HALS CASTLE: CRUSADERS & CITY FOUNDER

Once one of the largest castles in Lower Bavaria! An Hungarian queen resided here, war was declared on King Wenzel of Bohemia, Bamberg's Bishop Albrecht was imprisoned - a knightly search for traces through the buildings and vaults of the Halser Count's Castle. Those who are brave put on heavy armor ... sturdy shoes & torch required!



	08.03. / 22.03. / 05.04. / 17.05. / 28.06. / 05.07. / 02.08. / 13.09. / 11.10. — 10 a.m. / 12.07. / 26.07. — 5 p.m. duration: 2 hrs
	adults 17.00 €; children 9.00 €
	minimum 4 persons; prior notice via phone or e-mail
	Passau-Hals - marketplace  D

**Stadtfruchs-Touren** / M. Koopmann M.A. / Lindental 46c / 94032 Passau / Ph. +49 (0)851/45892 or +49 (0)151 / 44667551 / stadtfuchspassau@aol.com / [www.stadtfuchs-passau.de](http://www.stadtfuchs-passau.de)

## SCAVENGER HUNT

Explore the hidden alleyways of Passau by this fun treasure hunt. You will not only find little gifts, but also learn about Passau and its highlights.



	24.05. 12 p.m. and on request duration: 2 hrs
	44.50 €
	minimum 6 persons; prior notice via phone or e-mail
	Mooring A 11  D, GB

**TOPassau GmbH & Co. KG** / Stefan Heusler / Hermann-Mayrhofer-Str. 15 / 94036 Passau Ph. +49 (0)176/20801965 / [info@topassau.de](mailto:info@topassau.de) / [www.topassau.de](http://www.topassau.de)

## CODE PASSAU

Join our Code Passau tour and discover the city in a whole new way. With images, puzzles, and exciting challenges, you'll explore the most beautiful spots and alleys of the Three Rivers City on your own.



	11.04. 11 a.m. and on request duration: 2 hrs
	44.50 €
	minimum 6 persons; prior notice via phone or e-mail
	Mooring A 11
	D, GB

**TOPassau GmbH & Co. KG** / Stefan Heusler / Hermann-Mayrhofer-Str. 15 / 94036 Passau Ph. +49 (0)176/20801965 / [info@topassau.de](mailto:info@topassau.de) / [www.topassau.de](http://www.topassau.de)

## CULINARY DELIGHTS: ALL ABOUT BEER

Did you know that the Bavarian Purity Law of beer is more than 500 years old and is still applied? Learn how beer is produced, but also hear stories about the history of beer and – of course – also taste different kinds of beer and dishes with beer from various chefs of Passau. The highlight is our surprise for you at the end of the tour!



	21.11. 11 a.m. and on request duration: 3 hrs
	65.00 €
	minimum 4 persons; prior notice via phone or e-mail
	Max monument in front of St. Stephan's cathedral
	D, GB

Passau Tours GmbH & Co. KG / Sechzehnerstr. 6c / 94032 Passau / Ph. +49 (0)163 / 4092992  
or +49 (0)851 / 20986068 / info@passau-tours.com / www.passau-tours.com

## CULINARY SPOOKY TOUR

Let the devil himself guide you through the alleyways of the city and follow a story full of suffering, sorrow and tragedy - not for the faint-hearted!

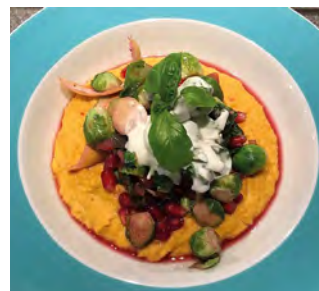


	31.10. 6 p.m. and on request duration: 2 hrs
	66.00 €
	minimum 8 persons; prior notice via phone or e-mail
	Mooring A 11
	D, GB

TOPassau GmbH & Co. KG / Stefan Heusler / Hermann-Mayrhofer-Str. 15 / 94036 Passau  
Ph. +49 (0)176 / 20801965 / info@topassau.de / www.topassau.de

## CULINARY DELIGHTS BIO-VE-NAL: TRADITIONAL AND TRENDY

Explore Passau sustainably with our organic vegetarian tour: 5 culinary vegetarian delicacies, created from organically grown products from the "Genussregion" of Lower Bavaria served in special Passau restaurants await you on our leisurely city tour through tradition and modernity. Immerse yourself in the life of the past and present and enjoy Passau with all your senses!



	14.11. 5 p.m. and on request duration: 3 hrs
	65.00 €
	minimum 4 persons; prior notice via phone or e-mail
	Wittelsbach Fountain at Residence Square
	D, GB

Passau Tours GmbH & Co. KG / Sechzehnerstr. 6c / 94032 Passau / Ph. +49 (0)163 / 4092992  
or +49 (0)851 / 20986068 / info@passau-tours.com / www.passau-tours.com

## CULINARY DELIGHTS: THE LIGHT AND FRUITY ONE

Did you know that there used to be citrus trees in Passau in 1554 grown by the prince bishops? During this tour, you will learn about the long history of prince bishops in Passau, about their power, but also about their way of dining. But you will also discover and taste new locally organically grown super food in drinks and dishes or as a healthy snack and learn about the very special charity which grows these wonderful berries.



	24.10. 11 a.m. and on request duration: 3 hrs
	65.00 €
	minimum 4 persons; prior notice via phone or e-mail
	Kirchplatz in front of St. Gertraud - Innstadt
	D, GB

Passau Tours GmbH & Co. KG / Sechzehnerstr. 6c / 94032 Passau / Ph. +49 (0)163 / 4092992  
or +49 (0)851 / 20986068 / info@passau-tours.com / www.passau-tours.com

## CULINARY DELIGHTS: ALL ABOUT SPICES

Passau used to be a hotspot for the trade of spices and goods from the orient and occident for centuries. Discover the taste of former times as well as modern cuisine and learn about the vivid history of our 2000-year-old city.



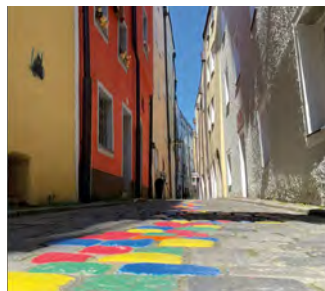
	28.11. 11 a.m. and on request duration: 3 hrs
	65.00 €
	minimum 4 persons; prior notice via phone or e-mail
	Nepomuk-Monument in front of Lukas-Kern-Orphanage in Ort
	D, GB

**Passau Tours GmbH & Co. KG** / Sechzehnerstr. 6c / 94032 Passau / Tel. +49 (0)163 / 4092992  
or +49 (0)851 / 20986068 / [info@passau-tours.com](mailto:info@passau-tours.com) / [www.passau-tours.com](http://www.passau-tours.com)

## HISTORIC AND CULINARY TIDBITS OF PASSAU

On this entertaining guided tour you will not only learn the most interesting facts about the old town of Passau, but they will also be served in perfect sizes. Of course, you can not only nourish your mind, but also pamper your palate at 4 tasting stations.

Let yourself be surprised and enjoy Passau with us!



	14.03. + 12.12. 11 a.m. and on request; duration: 1:30 hrs
	30.00 €
	minimum 4 persons; prior notice via phone or e-mail
	Statue of King Max at Domplatz
	D, GB

**Passau Tours GmbH & Co. KG** / Sechzehnerstr. 6c / 94032 Passau / Ph. +49 (0)163 / 4092992  
or +49 (0)851 / 20986068 / [info@passau-tours.com](mailto:info@passau-tours.com) / [www.passau-tours.com](http://www.passau-tours.com)

## PASSAU CITY TOURS ON THE CONVERTIBLE BUS

Departure of city tour: Untere Donaulände (A 11), further pick-up Bahnhofstrasse. Drive via Kloostergarten, Innstraße, Ludwigsplatz to Rindermarkt. Through the historical center via Steinweg to the Cathedral followed by Rathaus (town hall). From there crossing the suspension bridge to Veste Oberhaus (castle, fortress). Back to starting point via Neue Rieser Straße (beautiful view of Passau).



	Apr. - Oct. daily 11 a.m., 12:30 p.m., 2:30 p.m.; duration: 1:15 hrs
	adults 15.00 €; children 6-16 y. 9.00 €; children up to 5 y. free; family card 39.00 €
	no minimum number; no prior notice
	Untere Donaulände opposite mooring A 11
	D

**Donau-Schiffs-Reise-Center Helmut Eckerl e.K.** / Kastnergasse 1 / 94032 Passau  
Ph. +49 (0)851 / 34262 / [info@d-s-r-c.de](mailto:info@d-s-r-c.de) / [www.donau-schiffs-reise-center.de](http://www.donau-schiffs-reise-center.de)

## CITY TOUR WITH AUDIO GUIDE

Experience Passau in comfort on an informative city tour. Our driver will show you the most beautiful sights and places in the city of three rivers – from the historic old town to the impressive viewpoints.



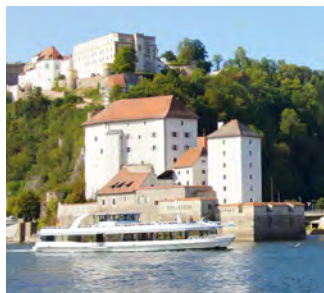
	Apr. - Oct. 15 daily 09:30 a.m., 10:30 a.m., 11:30 a.m., 2 p.m., 3 p.m., 4 p.m. duration: 45 Min.
	16.00 €
	minimum 2 persons; no prior notice
	Untere Donaulände bus parking
	D, GB

**Passau Guides Eichberger Schiffservice GmbH** / Messestraße 6 / 94036 Passau  
ph. +49 (0)851 / 989000220 / [passau-guides@globus-group.de](mailto:passau-guides@globus-group.de) / [www.passau-guides.com](http://www.passau-guides.com)



## “THREE RIVERS” SIGHTSEEING TOUR

Enjoy an unforgettable view of Passau with its Italian flair and colorful buildings. See St. Stephan's Cathedral, the confluence of the three rivers Danube, Inn and Ilz, Oberhaus Castle and the Monastery Maria Hilf. You will also obtain interesting information about the city via loudspeakers.



	<b>several times a day:</b> 14.03. - 08.11. and 28./29.11., 05./06.12., 12./13.12., 19./20.12. and daily 26.12. - 31.12. <b>main season:</b> 25.04. - 04.10. daily every 30 min., 10 a.m. - 4:30 p.m.; duration: 45 min
	adults 15.00 €; children 6-13 years 7.50 €; children up to 5 years free
	main season: mooring A 7/8 off season: mooring A 11
	D, GB

**Donauschiffahrt Wurm & Noé GmbH & Co. KG** / Höllgasse 26 / 94032 Passau  
Ph. +49 (0)851 / 929292 / [info@donauschiffahrt.eu](mailto:info@donauschiffahrt.eu) / [www.donauschiffahrt.eu](http://www.donauschiffahrt.eu)

## EVENTFUL ROUNDTRIP WITH THE CRYSTAL SHIP

Come aboard of the Crystal Ship – Exclusively made with Swarovski Crystals: On this two-hour tour from Passau to Kasten, Obernzell and back you will be enchanted by the magic of the water, the world of Crystals and the romantic river landscape!



	<b>main season:</b> 25.04. - 04.10. daily 10:30 a.m., 1 p.m., 3:15 p.m. <b>off season:</b> 04.04. - 24.04. / 05.10. - 18.10. daily 11:15 a.m., 1:45 p.m. duration: 2 hrs
	adults 21.00 €; children 6-13 years 10.50 €; children up to 5 years free
	Mooring A 11
	D, GB

**Donauschiffahrt Wurm & Noé GmbH & Co. KG** / Höllgasse 26 / 94032 Passau  
Ph. +49 (0)851 / 929292 / [info@donauschiffahrt.eu](mailto:info@donauschiffahrt.eu) / [www.donauschiffahrt.eu](http://www.donauschiffahrt.eu)

## BAREFOOT PASSAU XL

Explore the three rivers in the best kind of way – by the waterside! And therefore we have a new and unique ship: The Barefoot Boat by Til Schweiger has an exciting atmosphere of wellness and naturalness. Take a seat and enjoy a wonderful sightseeing tour along the old part of Passau and downwards to the idyllic Danube valley.



	23.05. - 04.10. Tue. - Sun. 11 a.m. duration: 1:15 hrs
	adults 18.50 €; children 6-13 years 9.25 €; children up to 5 years free
	Mooring A 11
	D, GB

**Donauschiffahrt Wurm & Noé GmbH & Co. KG** / Höllgasse 26 / 94032 Passau  
Ph. +49 (0)851 / 929292 / [info@donauschiffahrt.eu](mailto:info@donauschiffahrt.eu) / [www.donauschiffahrt.eu](http://www.donauschiffahrt.eu)

## BAREFOOT LOCK TOUR TO ENGELHARTSZELL

Your time-out upon the Danube: The Barefoot Boat by Til Schweiger is your new happy place and takes you on a relaxed 4 hour trip from Passau to Engelhartszell with an impressive crossing of the lock in Jochenstein. Take a seat on board, enjoy a drink or delicious meal and recharge your batteries!



	23.05. - 04.10. Tue. - Sun. 12:30 p.m. duration: 4 hrs
	adults 29.50 €; children 6-13 years 14.75 €; children up to 5 years free
	Mooring A 11
	D, GB

**Donauschiffahrt Wurm & Noé GmbH & Co. KG** / Höllgasse 26 / 94032 Passau  
Ph. +49 (0)851 / 929292 / [info@donauschiffahrt.eu](mailto:info@donauschiffahrt.eu) / [www.donauschiffahrt.eu](http://www.donauschiffahrt.eu)

## DISCOVER THE CITY\_ON\_THREE\_RIVERS



- 1 Conjunction Point of Danube, Inn and Ilz
- 2 Old Town Hall (Carillon)
- 3 St. Stephen's Cathedral (Organ Concerts)
- 4 Pilgrimage Church "Mariahilf"
- 5 Fortress "Veste Oberhaus" and Museum
- 6 Roman Museum "Kastell Boiotro"
- 7 Museum of Modern Art Wörlen

- 8 Passau Glass Museum
- 9 Museum at the Cathedral
- 10 Fresco Museum Niedernburg (Tomb of Blessed Gisela of Hungary)
- 11 Exhibition Hall "Kulturmodell Bräugasse"
- 12 "Art Alley" Höllgasse / AGON e.V.
- 13 Art Association "Kunstverein Passau e.V." – Sankt Anna-Kapelle
- 14 Artists' Group "Produzentengalerie Passau"

- 15 Theatre of Passau's Prince-Bishop
- 16 Scharfrichterhaus
- 17 Café Museum – Passau's Jazzclub
- 18 Medieval Torture Museum at Anger
- 19 Live-Club Zaubenberg
- 20 Gallery Art Active for Contemporary Art